

Century Family Farms: Celebrating 100 Years of Ownership

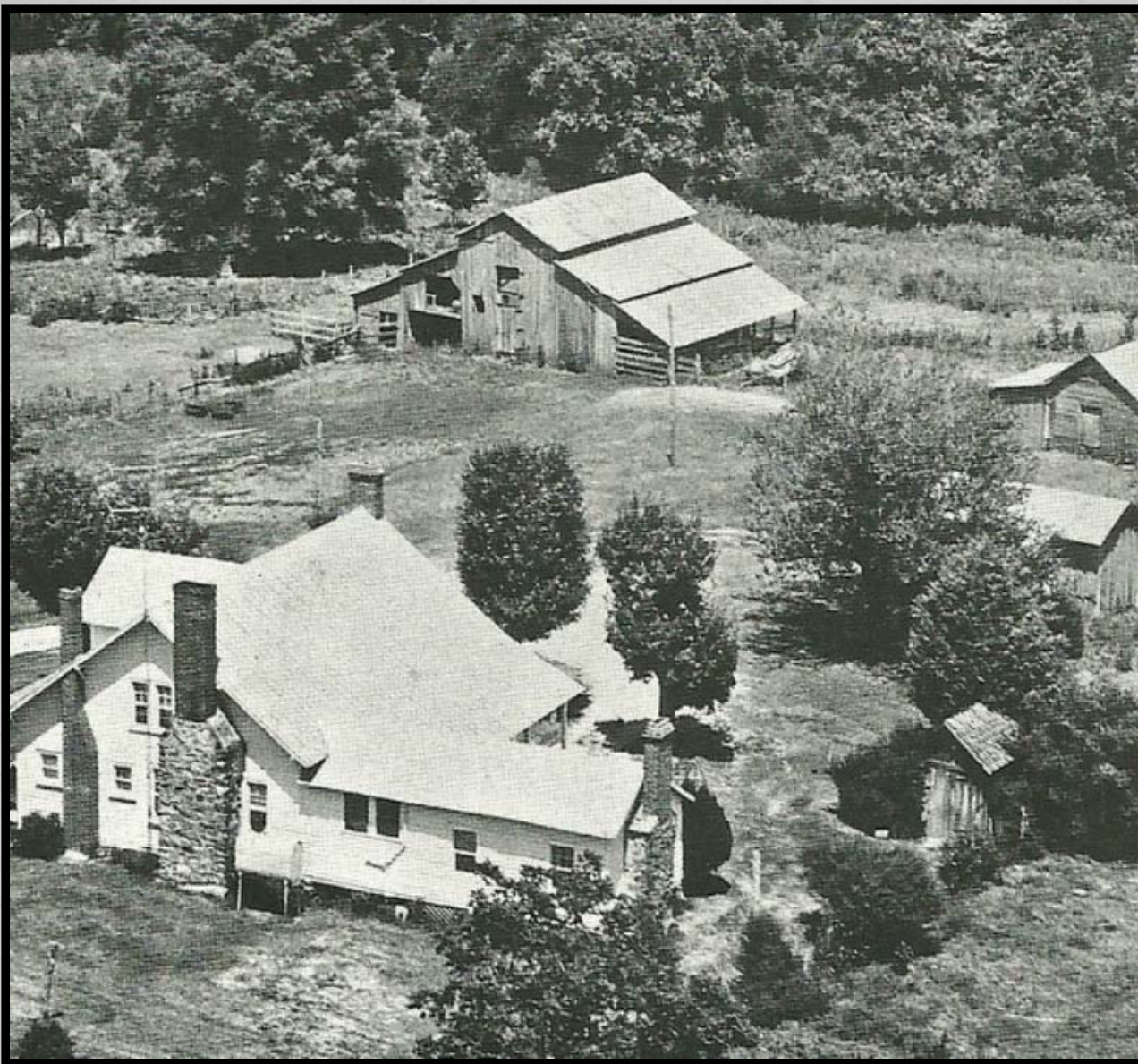
A program of the N.C. Department of Agriculture and
Consumer Services

Steve Troxler, Commissioner



Henry G. Paris and Roxie Patterson Paris (parents of Marie Paris Buckner) pose in 1935 in front of the historic Paris farm. Henry Paris purchased the farm in 1898. (Courtesy of Marie P. Buckner.)

Paris-Buckner Farm – Alamance County



Paris-Buckner
Farm circa
1954 -
Alamance
County



Cows on the Paris-Buckner Farm – Alamance County



Grandsons working on the Paris-Buckner
Farm – Alamance County



Hay for cattle
on the Paris-
Buckner Farm
– Alamance
County



Cates-Swathmoor Farm
– Alamance County



Cates-Swathmoor Farm – Alamance County



Cates-Swathmoor Farm – Alamance County



Cates-Swathmoor Farm – Alamance County



Cates-Swathmoor Farm – Alamance County



Earl Blevins Farm – Ashe County



Earl Blevins Farm – Ashe County



Earl Blevins Farm – Ashe County



Julian and Ella Thompson Farm – Bertie County



Julian and Ella Thompson Farm – Bertie County



Julian and Ella Thompson Farm – Bertie County



Julian and Ella Thompson Farm – Bertie County



Julian and Ella Thompson Farm – Bertie County



Aaron Kelly Farm – Bladen County



Aaron Kelly
Farm –
Bladen
County



Aaron Kelly
Farm – Bladen
County



Aaron Kelly Farm – Bladen County



Wildwood Farm
– Bladen County
Albert Shaw
Family



Wildwood Farm –
Bladen County
Albert Shaw Family





Wildwood Farm –
Bladen County
Albert Shaw Family





Terri Wells Farm – Buncombe County



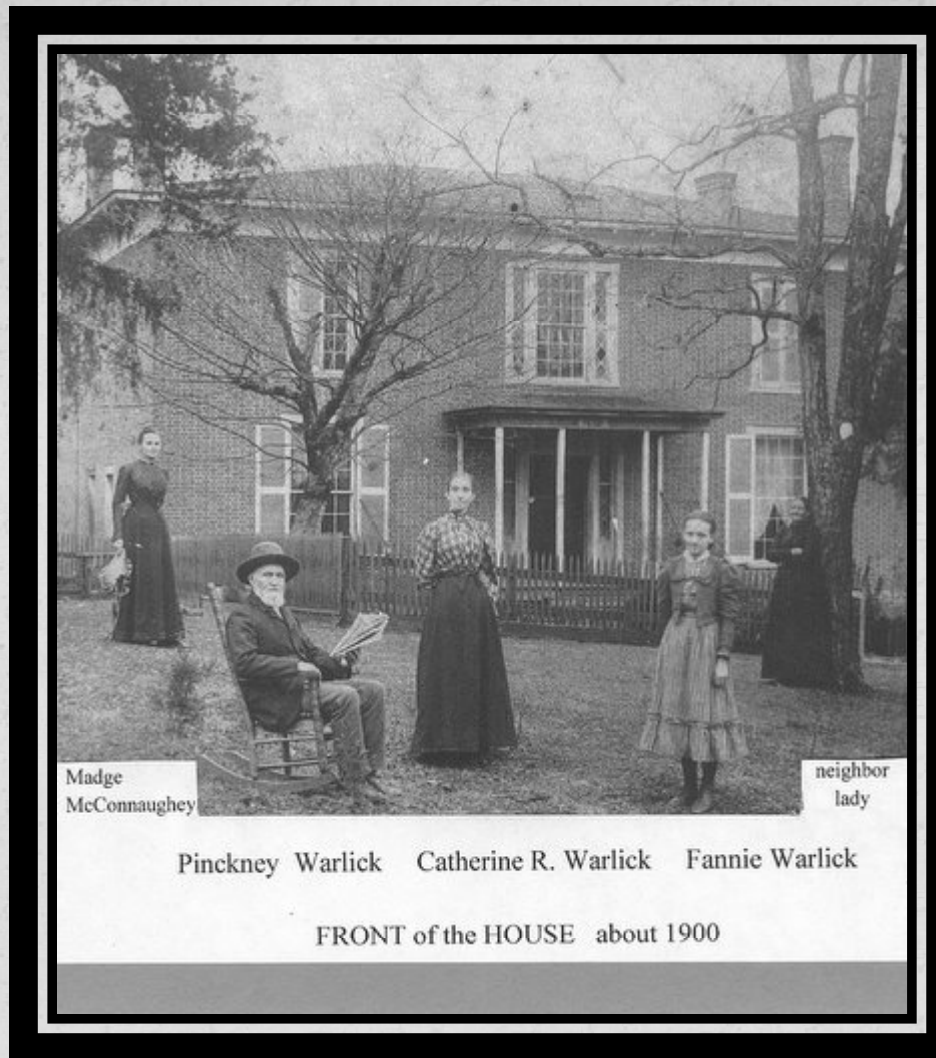
Terri Wells Farm – Buncombe County



Terri Wells Farm – Buncombe County



Terri Wells Farm –
Buncombe County

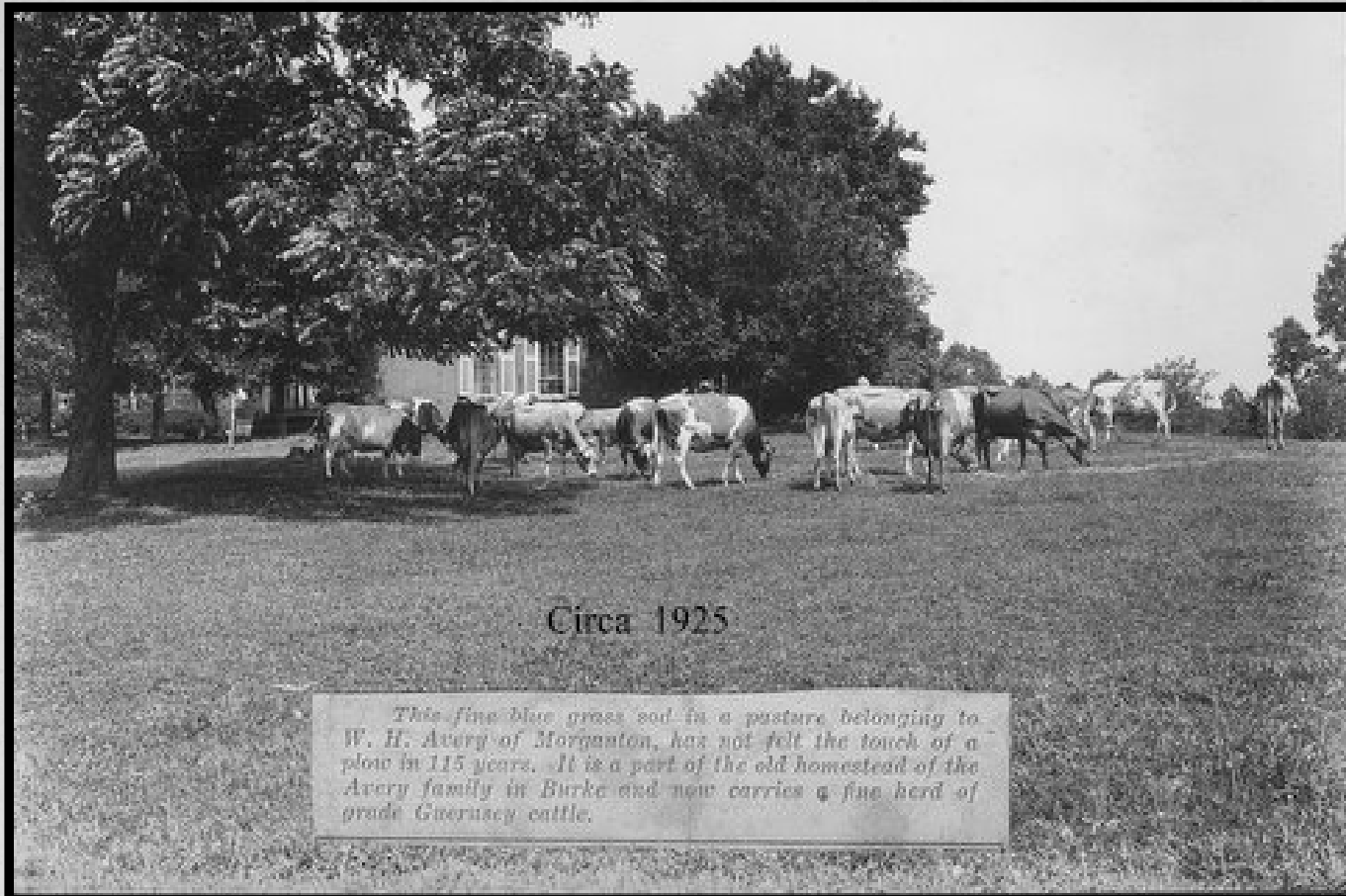


Jimmy and Mary Lou Furr Farm circa 1900 – Burke County



Addie Windick Avery loves her heifers - circa 1925

Jimmy and
Mary Lou Furr
Farm circa 1925
– Burke County



Circa 1925

This fine blue grass sod in a pasture belonging to W. H. Avery of Morganton, has not felt the touch of a plow in 115 years. It is a part of the old homestead of the Avery family in Burke and now carries a fine herd of grade Guernsey cattle.

Jimmy and Mary Lou Furr Farm circa 1925 – Burke County



Jimmy and Mary Lou Furr Farm circa 1900 – Burke County

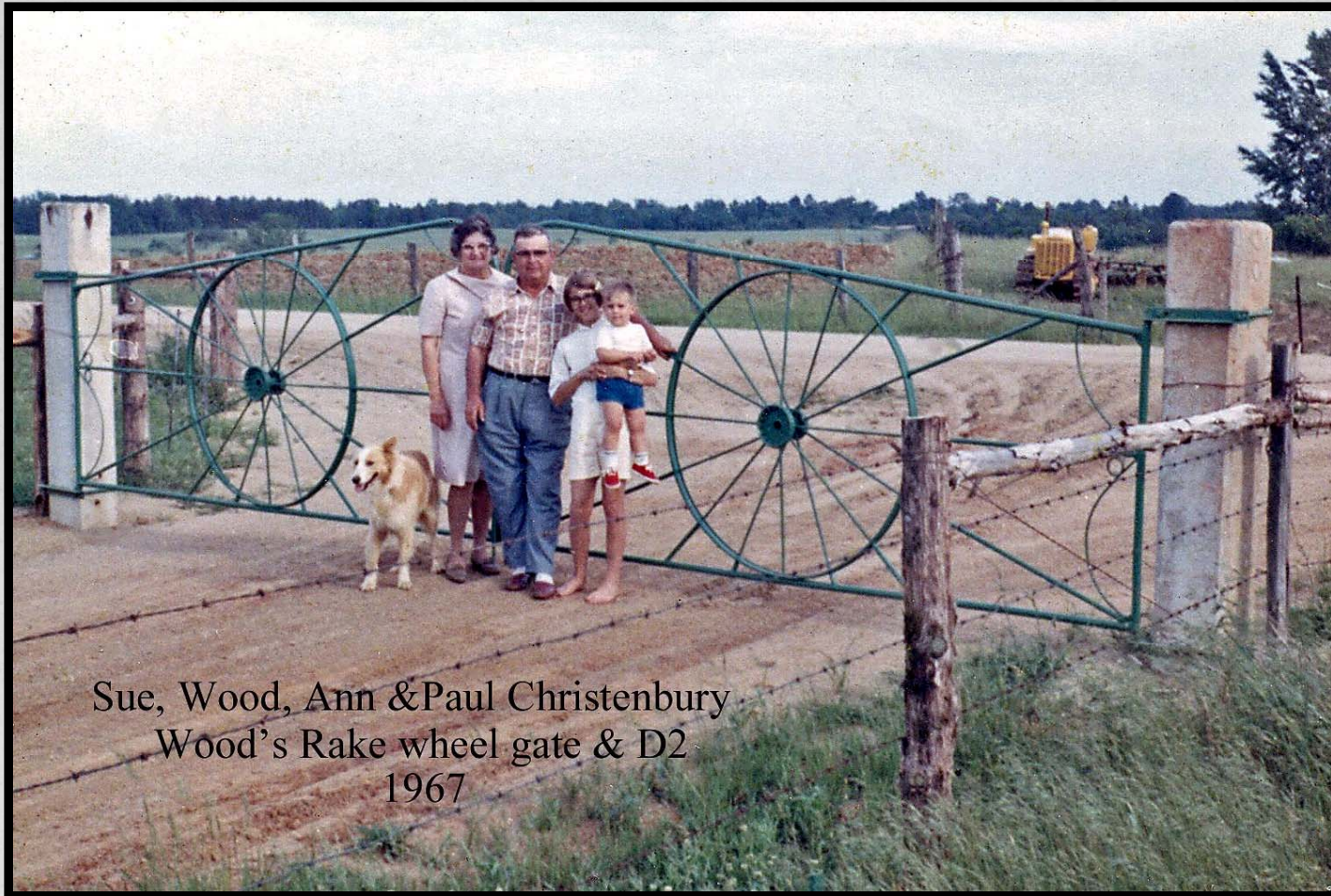


Ann Christenbury Carroll's painting of Ed and Cora's House

Christenbury Farm – Cabarrus County

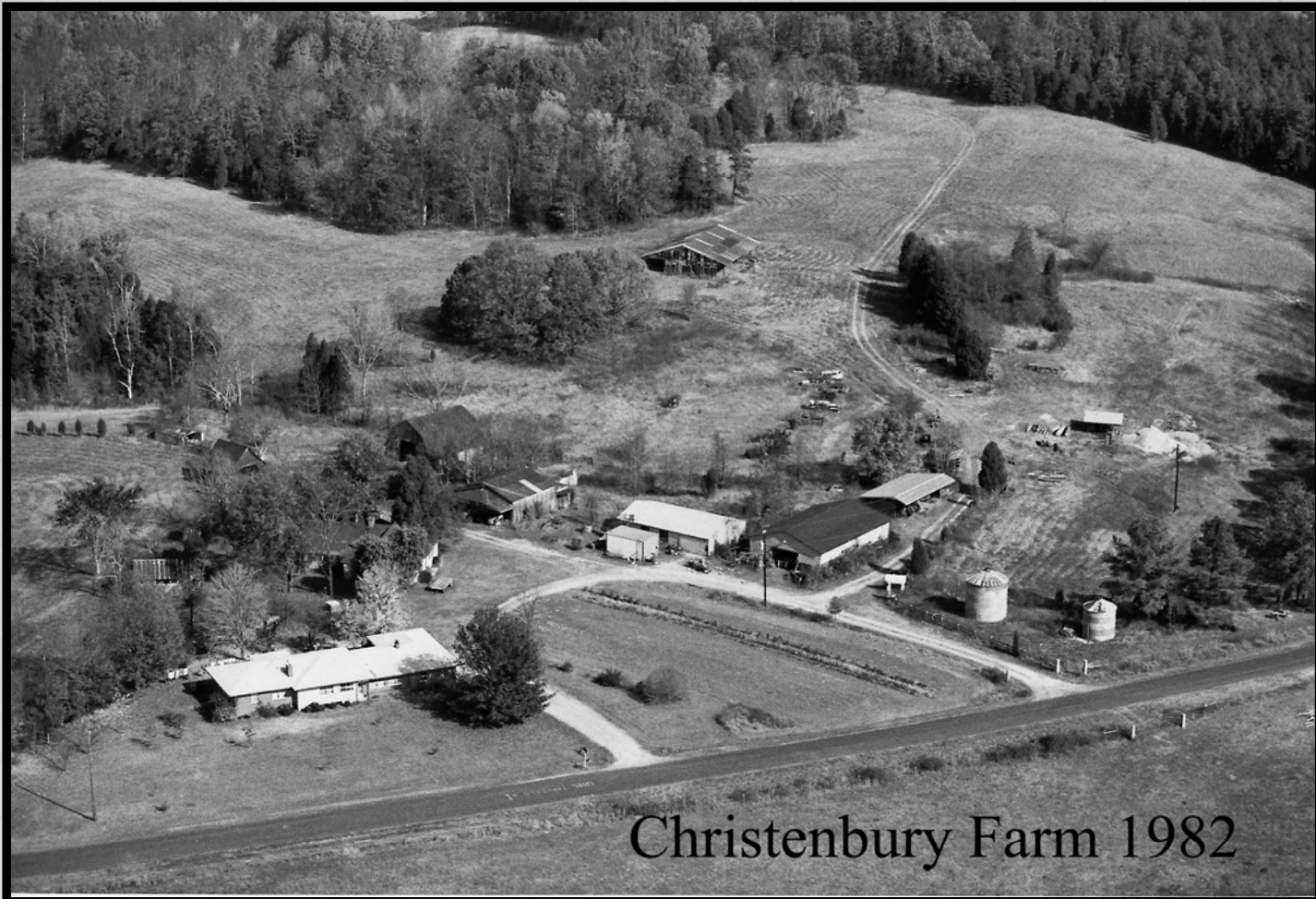


Christenbury Farm circa 1956 – Cabarrus County



Sue, Wood, Ann & Paul Christenbury
Wood's Rake wheel gate & D2
1967

Christenbury Farm circa 1967 – Cabarrus County



Christenbury Farm 1982

Christenbury Farm circa 1982 – Cabarrus County



Christenbury Farm circa 2006 – Cabarrus County



Luna Hollett Farm circa 1908 – Caswell County



Log cabin on Luna Hollett Farm – Caswell County



Snow-covered
bridge on Luna
Hollett Farm –
Caswell County



Gate to Luna Hollett Farm – Caswell County



Jack Pointer Farm – Caswell County



Jack Pointer Farm – Caswell County



Jack Pointer Farm – Caswell County



Jack Pointer Farm – Caswell County



Claudie Taylor Farm – Caswell County



Goodwin Farm – Chatham County



Goodwin Farm –
Chatham
County



Goodwin
Farm –
Chatham
County



Goodwin Farm – Chatham County



Bob Blake Farmhouse – Columbus County



Frank Galloway Farm –
Columbus County





Cattle on the Frank Galloway Farm – Columbus County



Frank Galloway Farm – Columbus County



Betty Russell Rhem Farm – Craven County



Betty Russell Rhem Farm – Craven County



Roy Donald
Hilton Farm –
Davidson
County



Log barn built in the 1920s at Buie Farm – Davidson County



Log barn and wheat
house at Buie Farm –
Davidson County

Wheat barn, at right, built
1910-1920 at Buie Farm –
Davidson County





Buie Farm – Davidson County



Buie Farm – Davidson County



Sorghum field at Hall Farm – Duplin County



Hall Farm – Duplin County

Hall Farm – Duplin County





Hall Farm – Duplin County



Kim Page Farm –
Edgecombe County

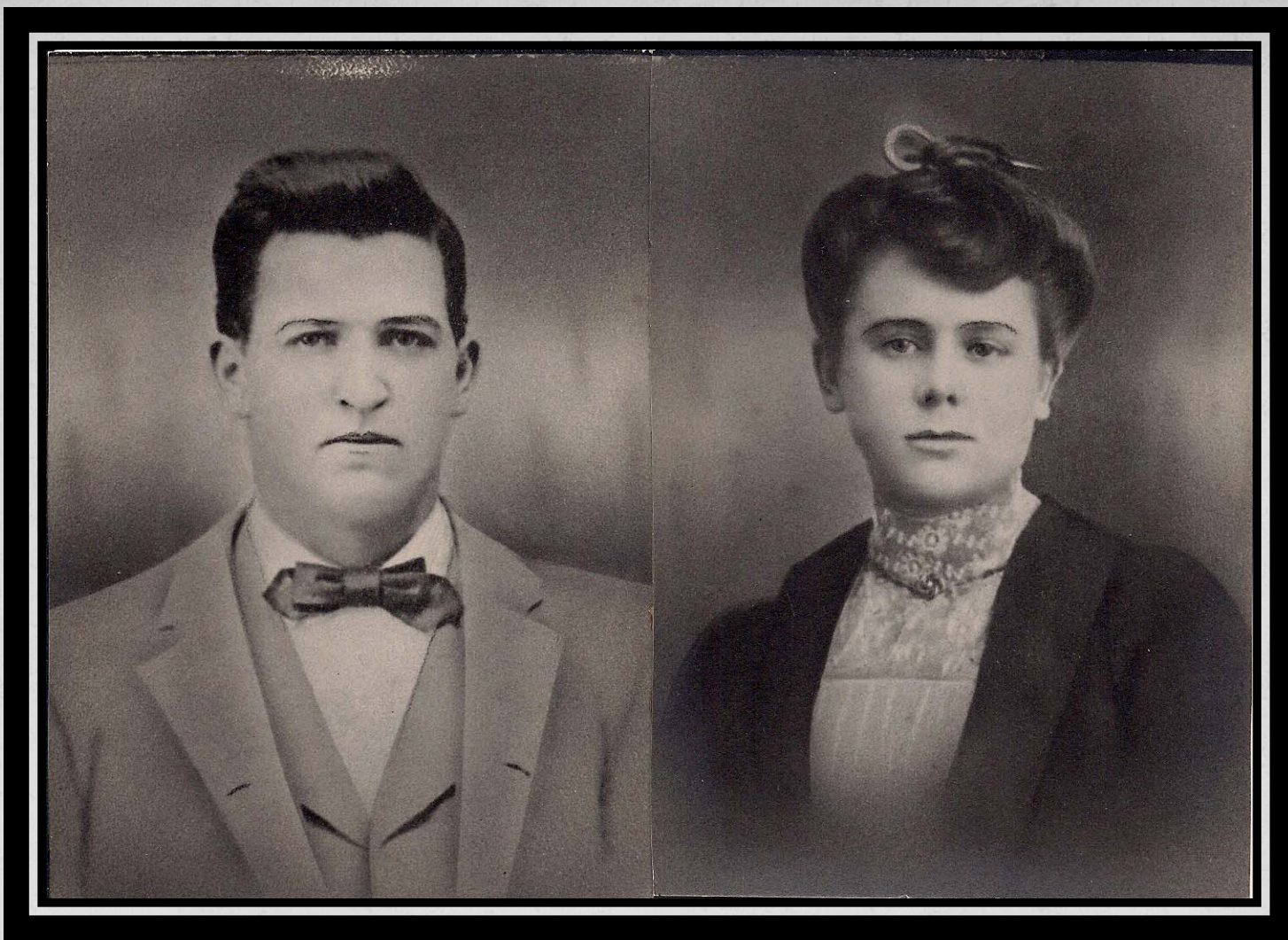


Kim Page Farm – Edgecombe County



Kim Page Farm – Edgecombe County

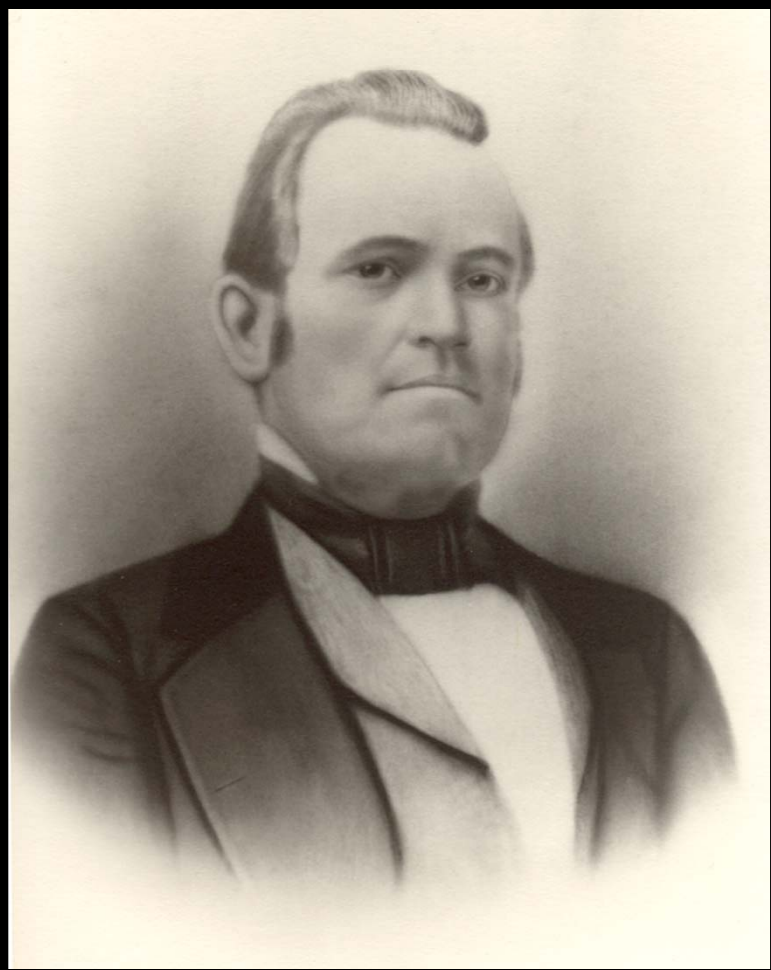




Kim Page Farm – Edgecombe County



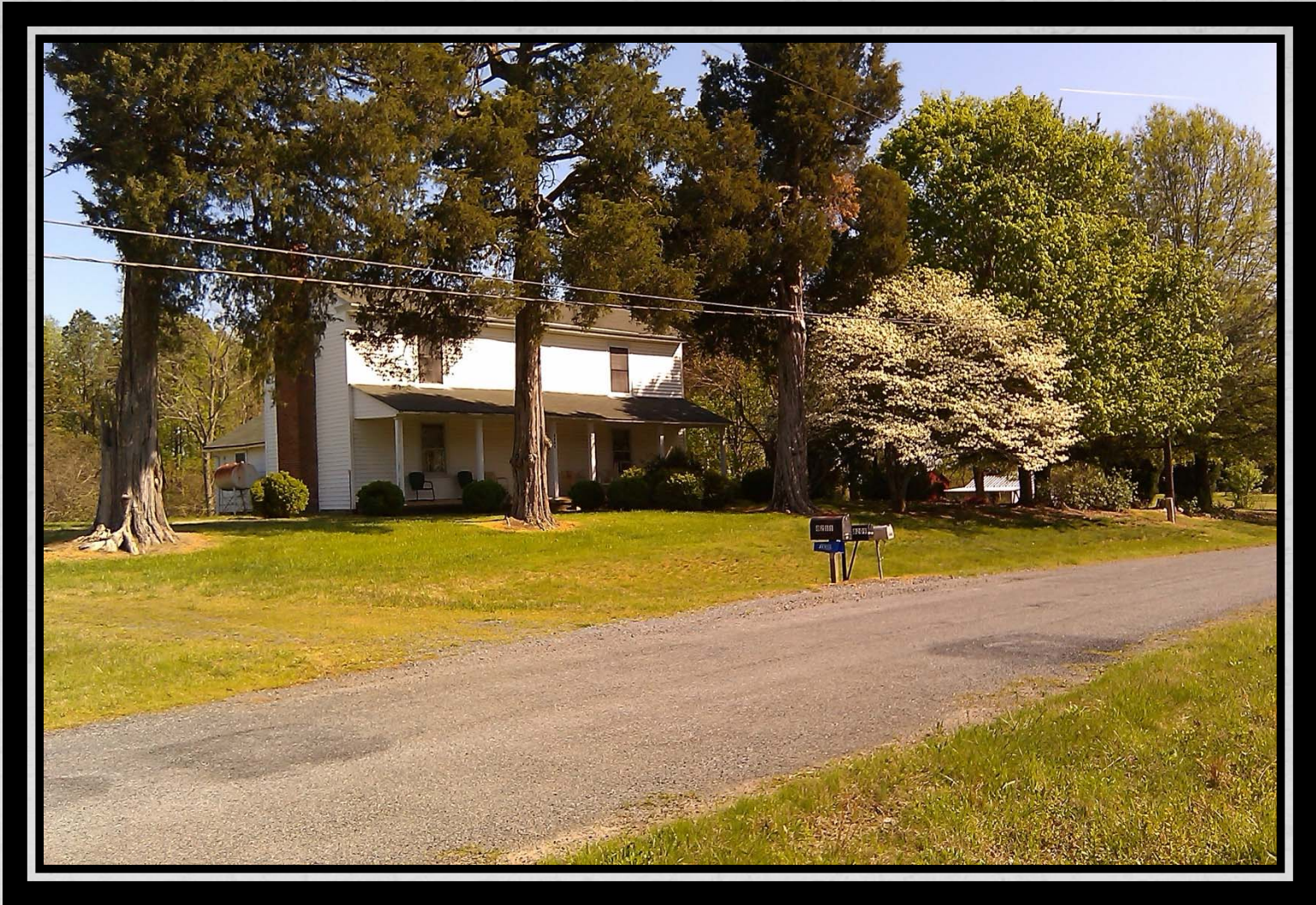
Kim Page Farm – Edgecombe County



Col. William Henry Marshall, left, and Mariah Marshall, right,
Linda Keeter Farm – Forsyth County



Linda Keeter Farm, The Cedars, circa 1900s – Forsyth County



Linda Keeter Farm, The Cedars, 2012 – Forsyth County



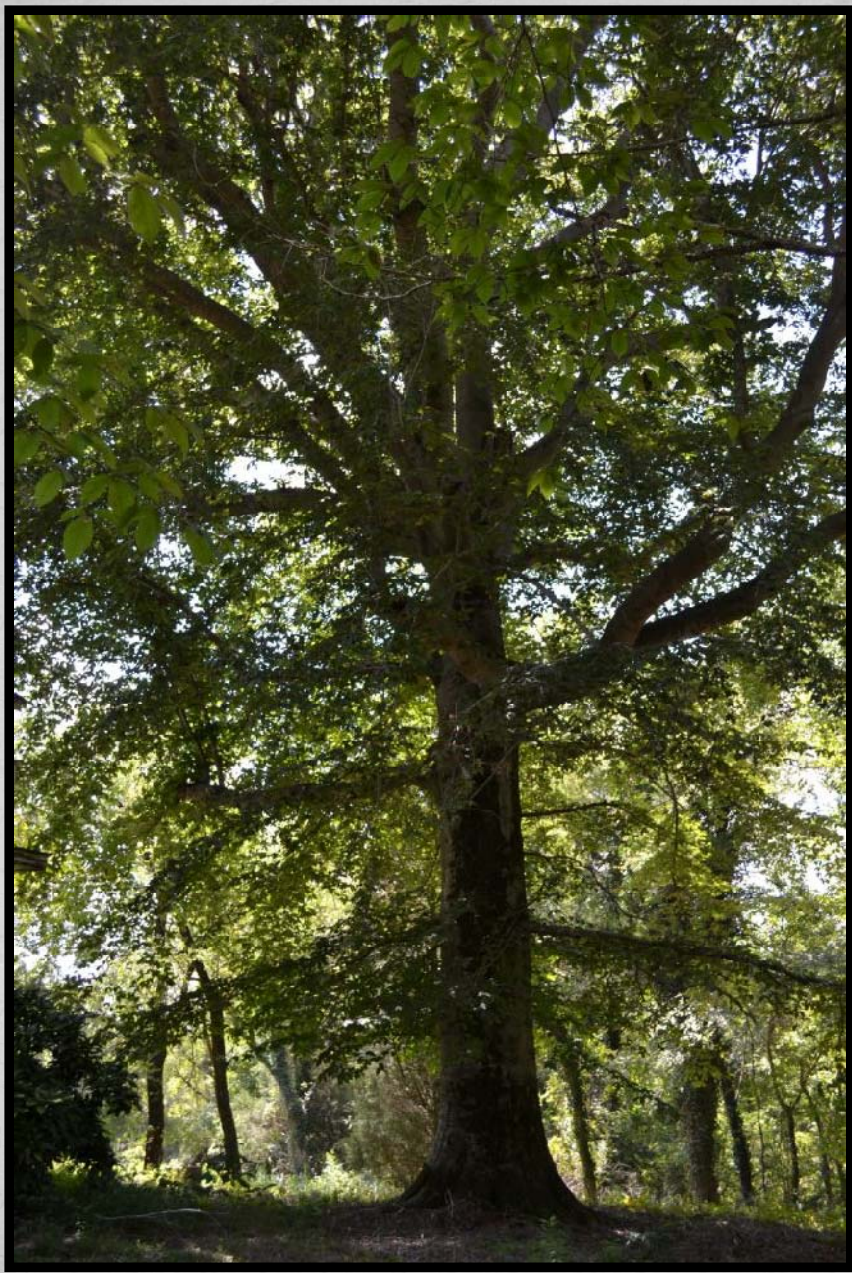
Aerial photo of the
Linda Keeter
Farm, The Cedars,
-- Forsyth County



Sparkle Lake at Linda Keeter Farm – Forsyth County



Linda Keeter Farm – Forsyth County



Tree at the Boner
Gordon Family Farm –
Forsyth County



Boner Gordon Family
Farm – Forsyth County





Boner Gordon Family Farm – Forsyth County



Richard Rhyne Farm – Gaston County



Richard Rhyne Farm – Gaston County



Richard Rhyne Farm – Gaston County



Richard Rhyne Farm – Gaston County



Richard Rhyne Farm – Gaston County



Dunkley Lowery Farm – Granville County



Dunkley Lowery Farm – Granville County



Dunkley Lowery Farm – Granville County



Dunkley Lowery Farm – Granville County



Planting tobacco on the Henry Frazier Farm – Granville County



Planting tobacco at the Henry Frazier Farm – Granville County



Thomas Huff Farm – Granville County
Barn constructed around 1938



Thomas Huff Farm – Granville County



Thomas Huff Farm – Granville County



Thomas Huff Farm – Granville County



Tobacco barns at the Thomas Huff Farm – Granville County



Five generations of the Forrest Farm – Greene County



Johnson-Edwards Farm – Greene County
William & Rachel Johnson house (1877)



Clapp Farm – Guilford County
Families of John G. Clapp Jr., Gladys Clapp, Randal
Clapp, G. Keith Clapp, Lisa Phelps



Clapp Farm – Guilford County
Families of John G. Clapp Jr., Gladys Clapp, Randal
Clapp, G. Keith Clapp, Lisa Phelps



Horses at the Clapp Farm – Guilford County
Families of John G. Clapp Jr., Gladys Clapp, Randal
Clapp, G. Keith Clapp, Lisa Phelps



1930s-era barn at the Clapp Farm – Guilford County
Families of John G. Clapp Jr., Gladys Clapp, Randal
Clapp, G. Keith Clapp, Lisa Phelps



Kearns Family
Ltd. Partnership
Farm – Guilford
County



Kearns Family Ltd. Partnership Farm – Guilford County



John Spence Farm circa 1890 – Harnett County



John Spence Farm circa 1987 – Harnett County



Cold Mountain Farms – Haywood County
Holbrook Family



Arrowood Acres Farm – Haywood County
Rogers Family



Arrowood Acres Farm – Haywood County
Rogers Family



Arrowwood Acres Farm – Haywood County
Rogers Family



Arrowood Acres Farm – Haywood County
Rogers Family



Torpy Skinner Farm – Haywood County



Torpy Skinner Farm – Haywood County



Torpy Skinner Farm – Haywood County



Torpy Skinner Farm – Haywood County



Cornelius Family Farm– Iredell County
Preston and Marsha Cornelius Family



Cornelius Family Farm barn – Iredell County
Preston and Marsha Cornelius Family



Cornelius Family Farm– Iredell County
Preston and Marsha Cornelius Family



Cornelius Family Farm barn – Iredell County
Preston and Marsha Cornelius Family



Rainbow over the Charles Lynn Farm – Iredell County



Snowfall at the Charles Lynn Farm – Iredell County



Charles Lynn Farm –
Iredell County



Cultivator at Charles Lynn Farm – Iredell County



Susan Barbour
Farm – Johnston
County



Larry and Judith Castleberry Farm – Johnston County



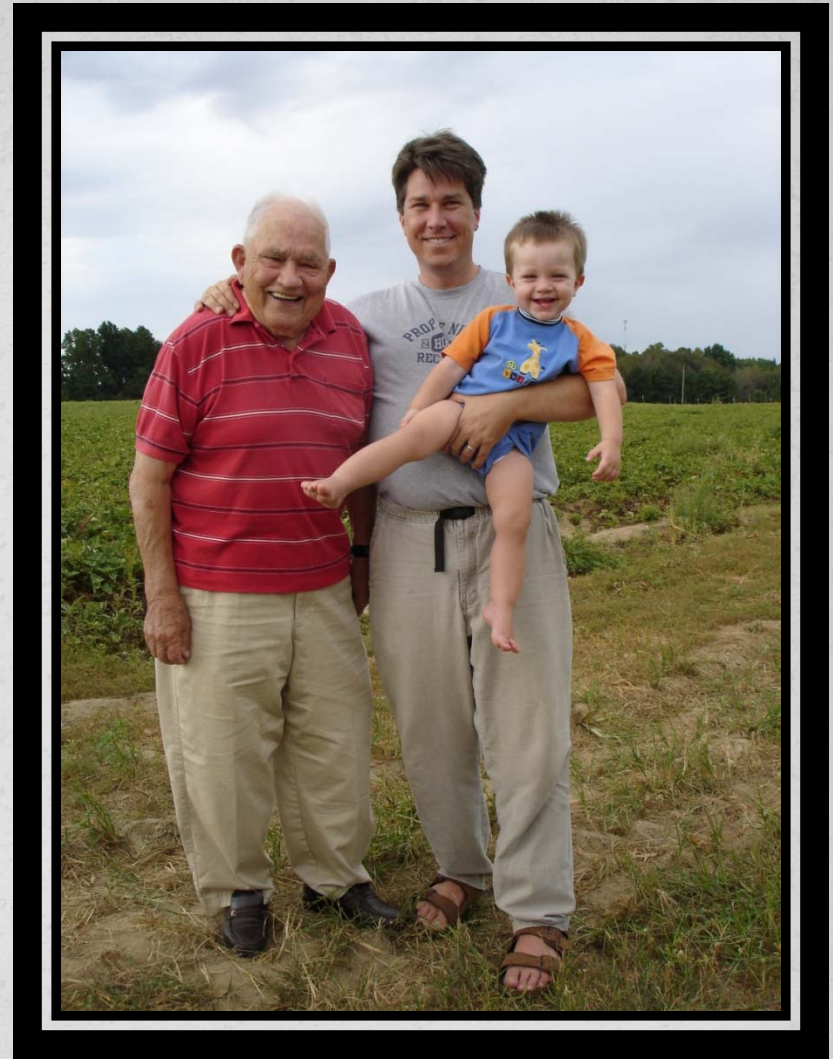
Larry and Judith Castleberry Farm – Johnston County



Neal and Laura Keene Farm – Johnston County



Neal and Laura Keene Farm – Johnston County



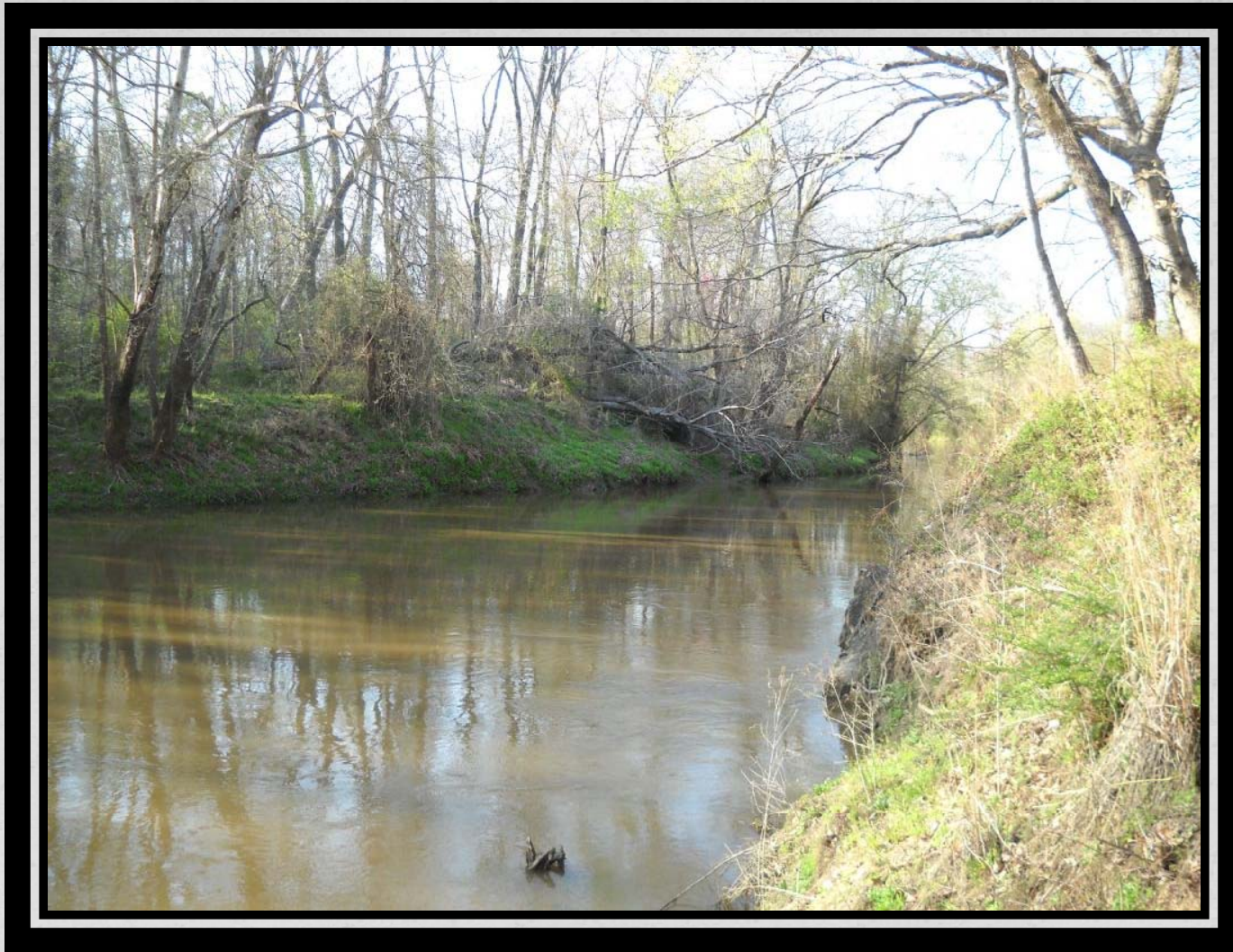
Neal and Laura Keene Farm – Johnston County



Neal and Laura Keene Farm – Johnston County



Neal and Laura Keene Farm – Johnston County



Neuse River on the Rose Family Farm – Johnston County
Thomas Rose Family



Harold Wood Lee Farm – Johnston County



Fishing at the Harold Wood Lee Farm –
Johnston County



Hayride at the Harold Wood Lee Farm –
Johnston County



Horses at the Harold Wood Lee Farm –
Johnston County



Hogs at the Harold Wood Lee Farm –
Johnston County



Aerial view of the Harold Wood Lee Farm –
Johnston County



Walter Williams
Farm circa 1940s –
Johnston County



Walter Williams Farm circa 1980 – Johnston County



Smokehouse at Walter Williams Farm – Johnston County



Walter Williams Farm – Johnston County



Dorothy Smith King Farm – Lee County



Dorothy Smith King Farm – Lee County



Dorothy Smith King Farm – Lee County



Dorothy Smith King Farm
– Lee County





Dorothy Smith King
Farm – Lee County



Charles Broadway Farm – Lenoir County



Charles Broadway Farm circa 1870s – Lenoir County



Farm scenes at the Charles Broadway Farm – Lenoir County



Charles Broadway Farm – Lenoir County



Samuel Dail Farm – Lenoir County



Cliff Tyndall Farm circa 1908 – Lenoir County



Cliff Tyndall Farm circa 1932 – Lenoir County



1897 farmhouse at June Bug Farms LLC – Lincoln County
Robert and Kathryn Wise Family



Barn built in the 1930s at June Bug Farms LLC – Lincoln County
Robert and Kathryn Wise Family



1940s cotton field at June Bug Farms LLC – Lincoln County
Robert and Kathryn Wise Family



June Bug Farms LLC – Lincoln County
Robert and Kathryn Wise Family



June Bug Farms LLC – Lincoln County
Robert and Kathryn Wise Family



Three generations at June Bug Farms LLC – Lincoln County
Robert and Kathryn Wise Family



Snow at Rickman Creek Farm– Macon County
Bill Fouts; Mary Booker; Guy, Tommy and Harvey Fouts families



The five Fouts siblings of Rickman Creek Farm– Macon County



Rickman Creek Farm– Macon County
Bill Fouts; Mary Booker; Guy, Tommy and Harvey Fouts families



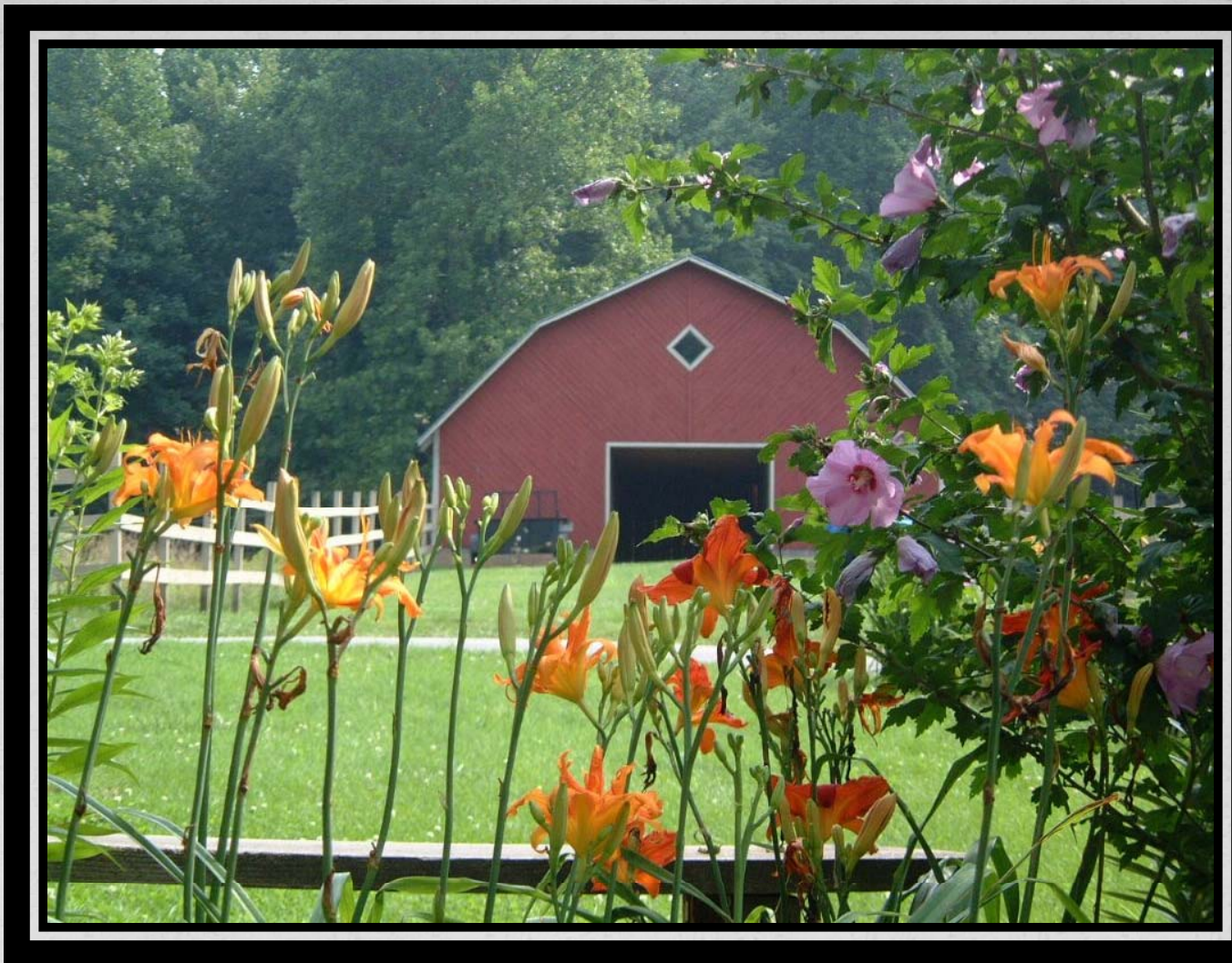
Making syrup at Rickman Creek Farm– Macon County
Bill Fouts; Mary Booker; Guy, Tommy and Harvey Fouts families



Rickman Creek Farm– Macon County
Bill Fouts; Mary Booker; Guy, Tommy and Harvey Fouts families



Mountain Chase Farm– McDowell County
Sara and Jennings Bryant Family



The barn in summer at Mountain Chase Farm–
McDowell County
Sara and Jennings Bryant Family



Hay cutting in the pasture at Mountain Chase Farm–
McDowell County
Sara and Jennings Bryant Family



Mountain Chase Farm– McDowell County
Sara and Jennings Bryant Family



Horses at Mountain
Chase Farm–
McDowell County
Sara and Jennings
Bryant Family



Sharpe Farm– Nash County
Richard Sharpe Family



E.T. and Mozelle Taylor Farm– Nash County



cemetery from 1851

1851-era cemetery at E.T. and Mozelle Taylor Farm– Nash County



Barn at E.T. and Mozelle Taylor Farm– Nash County



Tobacco barn circa 1940 at E.T. and Mozelle Taylor
Farm- Nash County



E.T. and Mozelle Taylor Farm– Nash County



Beale Farm– Northampton County
Steve Lewter Family



Merry Hill Farm– Orange County
Lynne and Grave Holtkamp Family



Pond at Merry Hill Farm– Orange County
Lynne and Grave Holtkamp Family



Pasture at Merry Hill Farm– Orange County
Lynne and Grave Holtkamp Family



Scottish flags at Merry Hill Farm– Orange County
Lynne and Grave Holtkamp Family



Mt. View Farm– Orange County
Gordon Neville Family



Mt. View Farm– Orange County
Gordon Neville Family



Robert Pope Farm– Orange County



Robert Pope Farm– Orange County



Spring Crest Farm – Orange County
Sam Woods Family



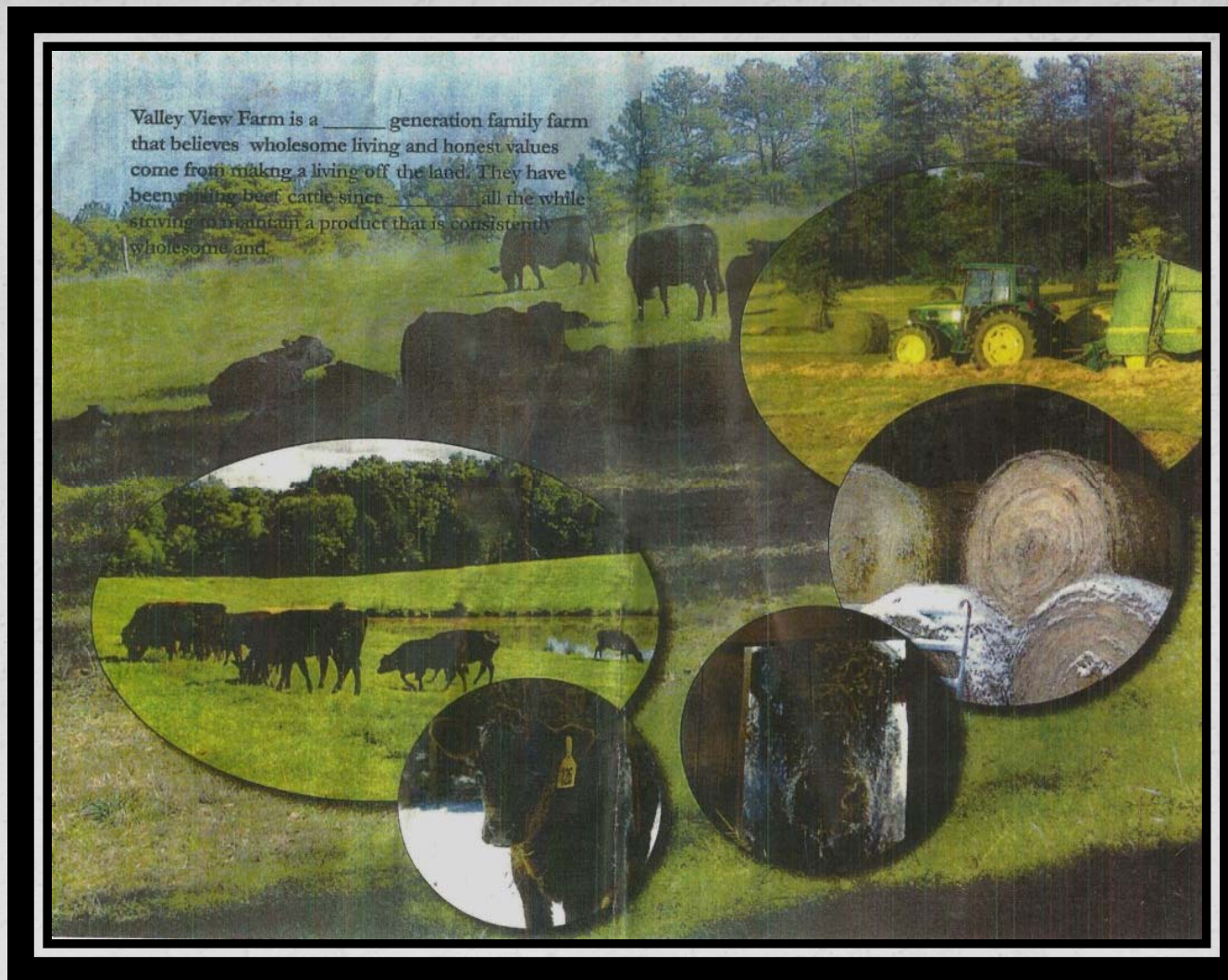
Spring Crest Farm – Orange County
Sam Woods Family



Spring Crest Farm – Orange County
Sam Woods Family



Spring Crest Farm – Orange County
Sam Woods Family



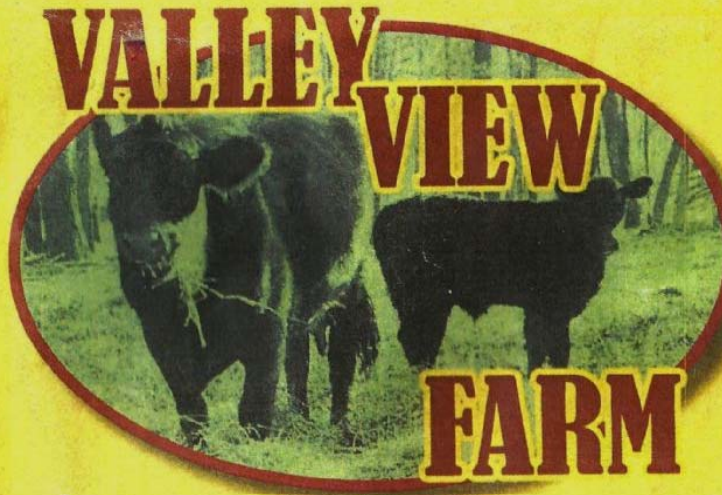
Brochure for Valley View Farm – Orange County
Yow Family



Valley View Farm – Orange County
Yow Family



Betty Sue Neville Yow with Valley View Farm – Orange County
Yow Family



All Natural Angus & Hereford/Angus Cross Steers
Farm-Born and Raised
Low Stress, Natural Environment
No Growth Hormones
No Unnecessary Antibiotics

Open 7 days a week
Please call for appointments

John & Betty Sue Yow
1426 Old Greensboro Rd.
Chapel Hill, NC 27516
919-942-4304 or 919-730-0242

Valley View Farm –
Orange County
Yow Family



L.E. and Eileen Ballance Farm – Pasquotank County



L.E. and Eileen Ballance Farm – Pasquotank County

L.E. and Eileen Ballance Farm –
Pasquotank County





L.E. and Eileen
Ballance Farm –
Pasquotank County





House at Richard Stallings Farm – Pasquotank County



Winter scene at Richard Stallings Farm – Pasquotank County



Richard Stallings Farm – Pasquotank County



Barn at Richard Stallings Farm – Pasquotank County



Richard Stallings Farm – Pasquotank County



Flowers at Richard Stallings Farm – Pasquotank County



Farm house after renovation at Old Post
Office Farm – Pender County
Robert Adrian King Family



Farm house before renovation at
Old Post Office Farm – Pender County
Robert Adrian King Family



Old Post Office Farm – Pender County
Robert Adrian King Family

Horses at Old Post
Office Farm –
Pender County
Robert Adrian King
Family





Llamas at Old Post Office Farm – Pender County
Robert Adrian King Family



Small-Sutton-Chappell Farm – Perquimans County



Carl Berkley Jones Farm – Person County



Janie Reece Farm – Person County



Amos Moore Farm – Pitt County



Amos Moore Farm – Pitt County



Amos Moore Farm – Pitt County



Baldwin Place log home – Randolph County
Randy Davis Family



Interior of the Baldwin Place log home – Randolph County
Randy Davis Family



Foust Farm – Randolph County
Margaret Foust & Children



Foust Farm – Randolph County
Margaret Foust & Children





Foust Farm – Randolph County
Margaret Foust & Children



Foust Farm – Randolph County
Margaret Foust & Children



Jay and Linda Hohn Farm – Randolph County



Bennett Family Farm – Rockingham County
Boyd Bennett and Bert Bennett families



Bennett Family Farm – Rockingham County
Boyd Bennett and Bert Bennett families



Bennett Family Farm – Rockingham County
Boyd Bennett and Bert Bennett families



Farm house and front porch at the Bennett Family Farm –
Rockingham County
Boyd Bennett and Bert Bennett families



Tractors at the Bennett Family Farm – Rockingham County
Boyd Bennett and Bert Bennett families



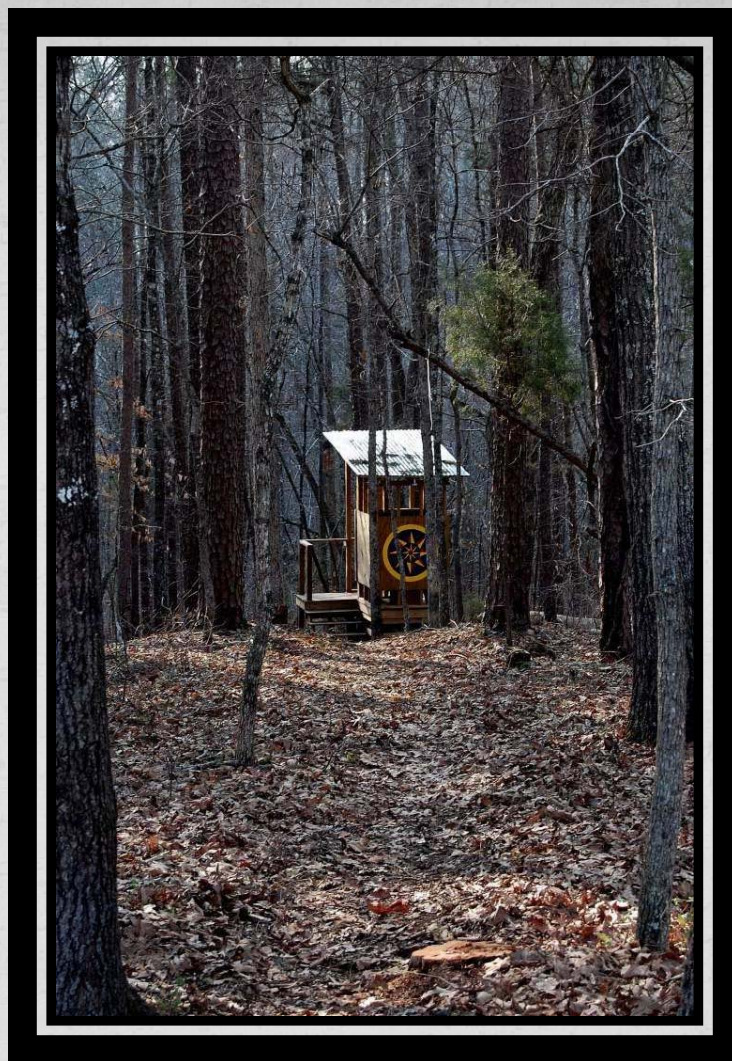
Stephen and Melanie Blount Farm – Rowan County



Stephen and Melanie Blount Farm – Rowan County



Stephen and Melanie Blount Farm – Rowan County



Stephen and Melanie Blount Farm – Rowan County



Bernice Clifton Farm – Sampson County
Clayton Clifton Heirs

Bernice Clifton Farm –
Sampson County
Clayton Clifton Heirs





Bernice Clifton Farm – Sampson County
Clayton Clifton Heirs



Bernice Clifton Farm – Sampson County
Clayton Clifton Heirs



Bernice Clifton Farm – Sampson County
Clayton Clifton Heirs



Jackson Farm – Sampson County
Thomas and Janet Jackson Family



Jackson Farm – Sampson County
Thomas and Janet Jackson Family



Jackson Farm – Sampson County
Thomas and Janet Jackson Family



Jackson Farm – Sampson County
Thomas and Janet Jackson Family



Jackson Farm – Sampson County
Thomas and Janet Jackson Family



Springtime at Thirteen Oaks Farm – Sampson County
Carl Warren Family



Winter at Thirteen Oaks Farm – Sampson County
Carl Warren Family



Ralph Coe Farm – Surry County



Ralph Coe Farm – Surry County



Ralph Coe Farm – Surry County



Fowler Farm – Surry County
Linda Fowler Davis Family



Fowler Farm – Surry County
Linda Fowler Davis Family



Fowler Farm – Surry County
Linda Fowler Davis Family





Fowler Farm – Surry County
Linda Fowler Davis Family



Fowler Farm – Surry County
Linda Fowler Davis Family



Fowler Farm – Surry County
Linda Fowler Davis Family



Laurel Heights Farm – Surry County
Iris Miller Gardner Family



Laurel Heights Farm – Surry County
Iris Miller Gardner Family



Laurel Heights Farm – Surry County
Iris Miller Gardner Family



Charles Perkins Farm – Surry County



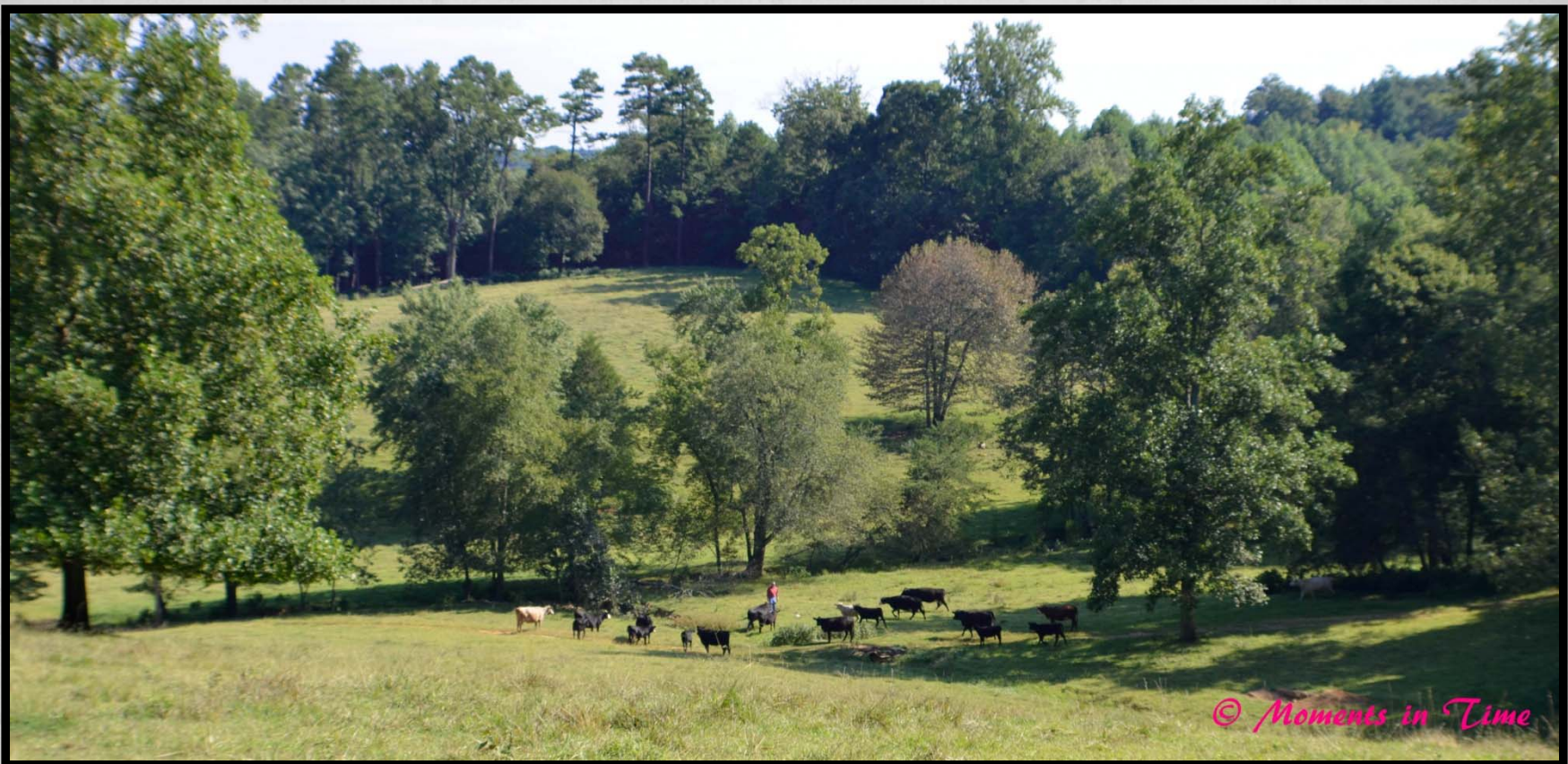
Charles Perkins Farm – Surry County



Charles Perkins Farm – Surry County



Charles Perkins Farm – Surry County



Charles Perkins Farm – Surry County



Stony Knoll Vineyards– Surry County
Van Coe Family



Stony Knoll Vineyards– Surry County
Van Coe Family



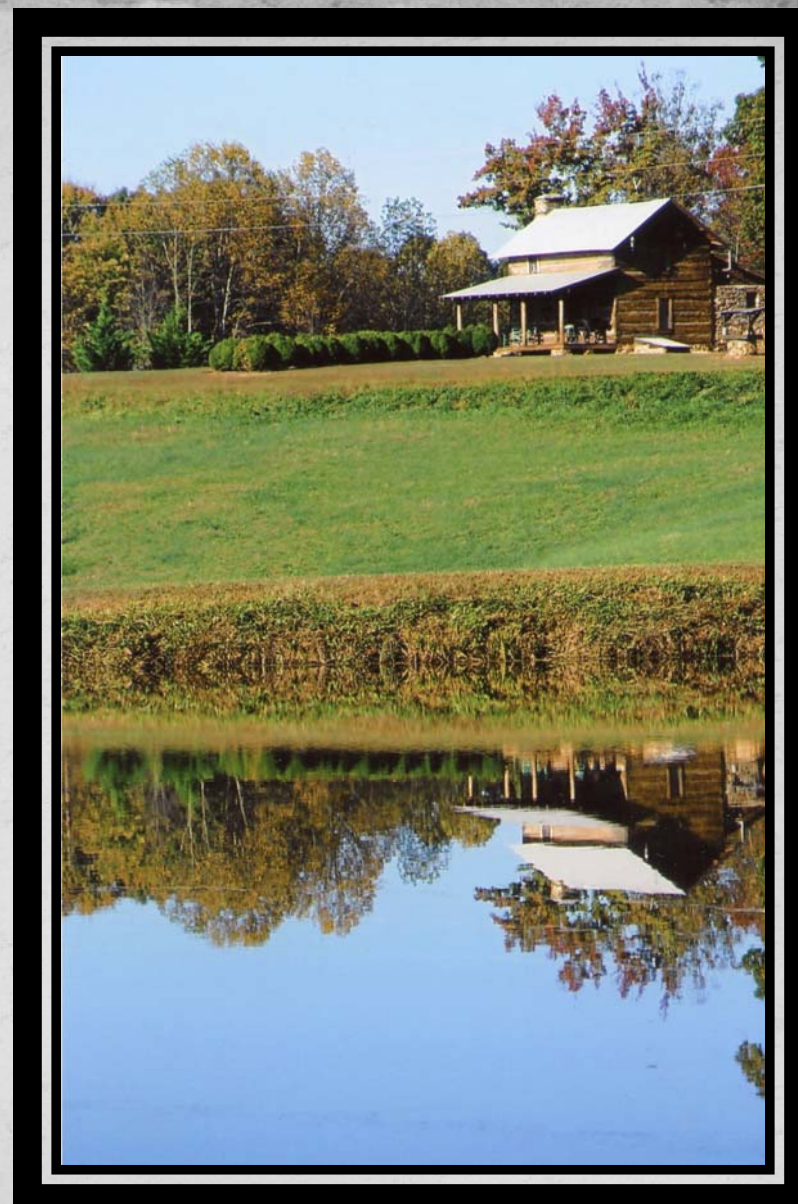
Stony Knoll Vineyards– Surry County
Van Coe Family



Stony Knoll Vineyards– Surry County
Van Coe Family



Stony Knoll Vineyards– Surry County
Van Coe Family



Stony Knoll Vineyards- Surry County
Van Coe Family



FARM LAND HELD IN FAMILY FOR MORE THAN 100 YEARS
Pictured left - right: Iris H. Lawrence, Evelyn H. Vinson, Rochelle H. Bolyard, Margaret H. Johnson and Honey Lou Edwards. All five sisters have been designated Century Farm Families by Commissioner Jim Graham and the North Carolina Department of Agriculture.

Farming: It's All In The Family

By Mrs. Turner Vinson

The Harrison sisters' farms were recognized as Century farms this year by the N.C. Department of Agriculture, because the farms have been in our family for more than 100 years.

Our parents were Brinton and Bettie Coats Harrison. Brinton and his father, Ichabud, were born and died on this farm. Brinton's grandfather, James A. Harrison, lived here and died in 1867.

The farm at one time contained several hundred acres of land, and all except the acres owned by Brinton have been divided and sold. Brinton's land was divided and given to his children. This land is now rented by the acre.

My sisters Honey Lou and I are retired secretaries; Rochelle is a secretary with state government; Iris is retired from her beauty business; and Margaret is employed with Champion Products in Clayton.

As children, we remember using a hoe to chop cotton and work tobacco. We pulled fodder and stacked it for the animals as feed during the winter months. We also took turns sitting up at the tobacco barn at night with our father to keep the fire going in the barn furnace.

We never complained; we did not know any other way. All our friends and neighbors were doing the same thing.

We walked to a two-room school at Baptist Center that was two miles from home. Every child walked then. We carried our lunch, which was usually a meat and biscuit and sweet potato. Sometimes we had peanut butter and crackers. Everybody drank water for lunch.

The year our oldest sister, Maudie Lee, finished the seventh grade, the county started busing us

to Clayton. The Clayton school did not have a lunchroom at that time.

One day we came home from school and our father had bought a new Buick. The windows were made out of cloth and celluloid; they would snap in or out, for hot or cold weather.

We did not have electricity until we were teenagers. We had a Union Carbide light system.

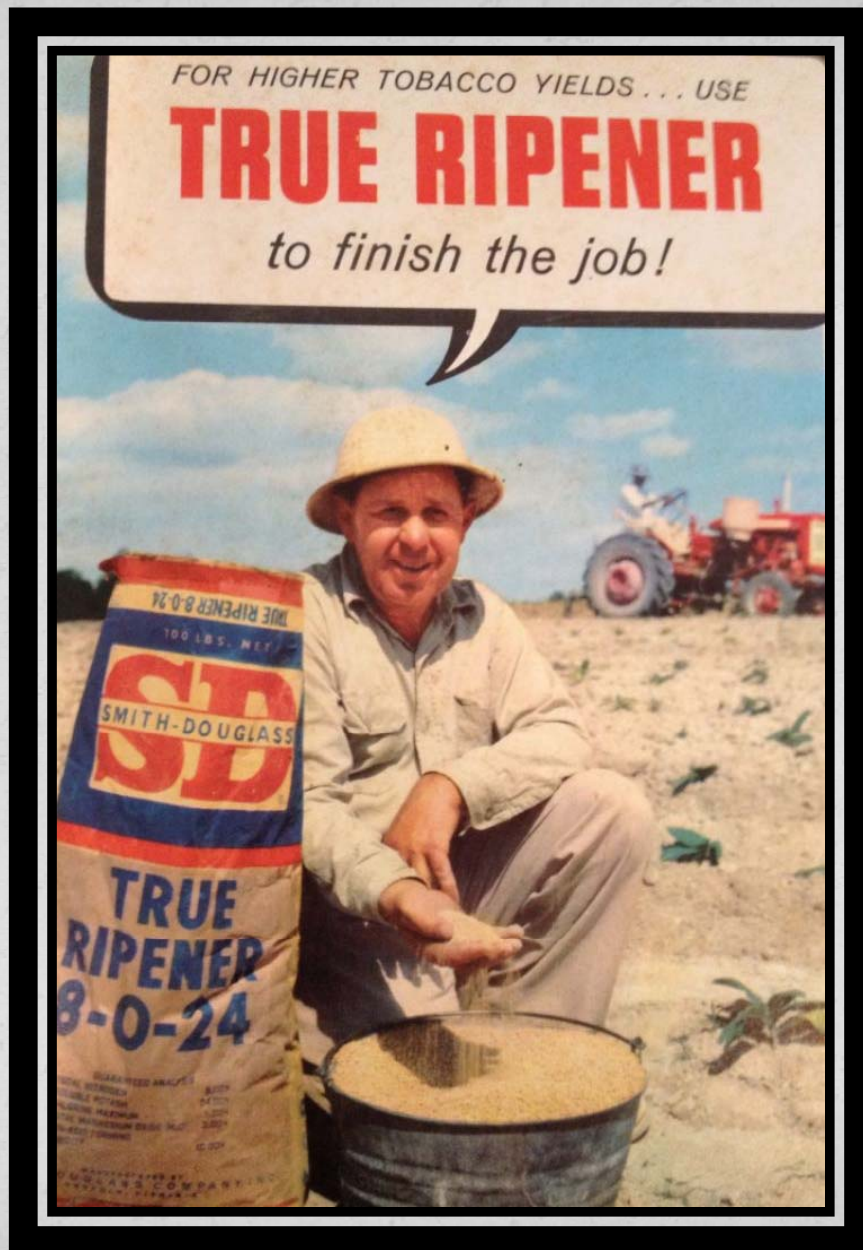
We looked forward to Sunday School and church at Baptist Center. During Hoover's time some people had Hoover Carts, others went to church on their two horse wagons and would pick up as many as could ride. You had to bring your own straight chair to sit in the wagon.

This was fun, but for the "Good Ol' Days" people talk about, it was not so.

Brinton Harrison Farm – Johnston County



Tobacco at Horton Farm – Wake County



Ad featuring
Horton Farm –
Wake County



Myrtle Mitchell Farm – Tyrrell County
House built circa 1900



Barns at the Myrtle Mitchell Farm – Tyrrell County



Bride in the wheat field at the Myrtle Mitchell Farm –
Tyrrell County



Peanut harvesting at the Myrtle Mitchell Farm – Tyrrell County



Backyard view from the Myrtle Mitchell Farm – Tyrrell County



Albert Crews Farm in the fall – Vance County



Albert Crews Farm in
spring and winter –
Vance County





Barn in winter at the Albert Crews Farm – Vance County



Pasture at the Albert Crews Farm – Vance County



Three generations of Hunt-Pearce Farm Family – Wake County



Hunt-Pearce Farm – Wake County
Advertisement for seed corn



Herman of Hunt-Pearce Farm – Wake County



Herman Jr. of Hunt-Pearce Farm – Wake County



Gardening at Hunt-Pearce Farm – Wake County



Randy Privette Farm – Wake County



Randy Privette Farm – Wake County



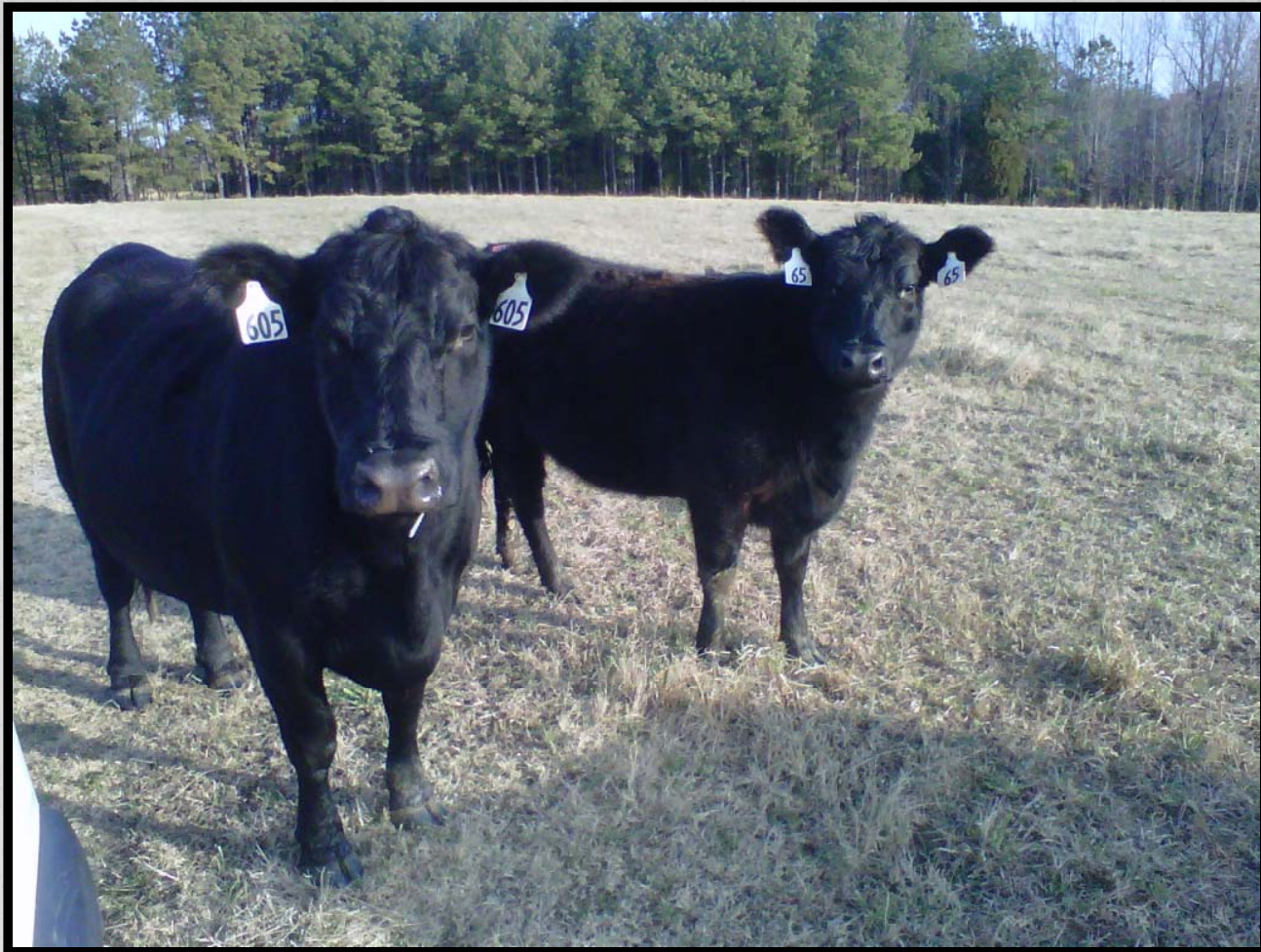
Randy Privette Farm – Wake County



Randy Privette Farm – Wake County



Wakelon Angus Farm – Wake County
Fowler Family



Wakelon Angus Farm – Wake County
Fowler Family



Wakelon Angus Farm – Wake County
Fowler Family



Ginny and Lucky at
Wakelon Angus Farm –
Wake County

Wakelon Angus Farm –
Wake County
Fowler Family





Wakelon Angus Farm – Wake County
Fowler Family



Wakelon Angus Farm – Wake County
Fowler Family



Fall at Scarecrow Farm – Watauga County
Farthing Family



Dad's truck at
Scarecrow Farm –
Watauga County
Farthing Family



Spring calving and
summer fruit at Scarecrow
Farm – Watauga County
Farthing Family





Fall leaves and a winter's snow at Scarecrow Farm
– Watauga County
Farthing Family



Winter scene at Scarecrow Farm – Watauga County
Farthing Family



John Pippin Farm Family – Wayne County



Digging potatoes at the John Pippin Farm – Wayne County



John Pippin Farm – Wayne County



John Pippin Farm – Wayne County



Farm house at the
Sherry Winstead
Farm – Wilson
County



No. 4 John Deere cutter at the Sherry
Winstead Farm – Wilson County



Tobacco barns at the Sherry Winstead Farm – Wilson County



Tobacco truck at the Sherry Winstead Farm – Wilson County



Sherry Winstead Farm – Wilson County



Newsome Family Farm – Wilson County



Newsome Family Farm – Wilson County



Newsome Family Farm – Wilson County



Spring Valley Farm – Yadkin County
Pardue Family



Spring Valley Farm – Yadkin County
Pardue Family



Spring Valley Farm
– Yadkin County
Pardue Family



Spring Valley Farm – Yadkin County
Pardue Family



Spring Valley Farm – Yadkin County
Pardue Family



Drew Branch Farm – Greene County



Lucille Phelps