

The Central Coastal Plain Water Use Area (CCPCUA)

The survey was conducted to document water use for the agricultural sector in Beaufort, Carteret, Craven, Duplin, Edgecombe, Greene, Jones, Lenoir, Martin, Onslow, Pamlico, Pitt, Washington, Wayne, and Wilson Counties. CCPCUA and associated rules were created in May, 2001 to help manage water resources within the 15 county area (General Statute 143-215-22H). Because limited information was available on agricultural water use, the North Carolina Department of Agriculture and Consumer Services was requested to collect information from farmers who withdraw 10,000 to 100,000 gallons in any one day. The Department works cooperatively with USDA's National Agricultural Statistics Service on surveys such as this one. Individual responses remain confidential and are only used in combination with other reports to produce county totals.

Farmers who use over 100,000 gallons in any one day are required to report their water usage directly to the Department of Environment and Natural Resources (DENR). Data for 2005 and 2006 were furnished by DENR and are summarized on the last page of this report.

Of the farms surveyed in the 15 county area, 148 withdrew between 10,000 and 100,000 gallons of water in any one day in 2006 compared with 178 farms in 2005. Timely rains in 2006 reduced the need for irrigation on some tobacco operations, while many vegetable and nursery operations experienced increased water needs. Adequate rain in the spring of 2005 reduced the need for crop irrigation. Drought conditions in the fall of 2005 are compared with a wet fall in 2004 which was the result of five hurricanes, a tropical storm, and overall soggy conditions. June was the largest water use month in 2006, averaging 15.1 million gallons daily, with a maximum daily withdrawal of 16.3 million gallons. July was the largest water use month in 2005, averaging 11.4 million gallons daily, with a maximum daily withdrawal of 28.3 million gallons. The largest water use month in 2004 was July, averaging 20.5 million gallons daily, with a maximum daily withdrawal of 25.0 million gallons.

Contractors in the region were contacted by email and phone. In addition, a questionnaire was mailed to operations which had previously reported, or had potential for, large water usage in the 15 county area. Operations that did not respond were contacted by telephone follow-up. For non-responses and refusals, the size and type of each operation was reviewed in order to estimate the farm's approximate water usage.

For each county, the total number of operations by type with total and average daily withdrawal capacity was summarized by month. The type of operations will not add to the total in all counties, because some operations had irrigated cropland and livestock. The daily withdrawal capacity is the potential amount of ground and/or surface water that could be utilized in a 24-hour period. In nearly all cases, this capacity was never met. Data was not disclosed if there were less than three operations in any category or if one report comprised 60 percent or more of the total.

Central Coastal Plain Total Water Use by Month

2006

Month	# Operations	Total Avg. Daily Ground (gallons)	Total Avg. Daily Surface (gallons)	Total Max Daily Ground (gallons)	Total Max Daily Surface (gallons)
Jan	122	1,625,047	240,000	1,848,028	265,000
Feb	124	1,763,838	256,071	2,003,462	265,000
March	127	1,909,680	1,492,290	2,208,388	1,826,000
April	134	2,126,004	8,497,225	2,850,359	8,836,997
May	138	2,799,653	10,921,663	3,475,885	11,322,864
June	141	3,612,831	11,492,957	4,306,480	11,963,968
July	139	3,277,799	7,275,989	3,084,621	7,946,027
Aug	140	3,107,474	6,236,063	3,553,266	7,277,182
Sept	129	2,453,107	1,719,843	2,731,260	1,756,979
Oct	126	1,961,715	1,431,682	2,190,109	1,461,905
Nov	124	1,769,291	1,351,995	1,998,980	1,372,611
Dec	122	1,827,889	1,251,421	2,106,292	1,276,777

Operations:

148 total operations
 119 livestock
 31 irrigation
 4 aquaculture

Daily Withdrawal Capacity (incl. ground and surface):

50,368,476 (gallons)

2005

Month	# Operations	Total Avg. Daily Ground (gallons)	Total Avg. Daily Surface (gallons)	Total Max Daily Ground (gallons)	Total Max Daily Surface (gallons)
Jan	136	2,102,295	544,887	2,453,284	1,210,767
Feb	137	2,276,519	616,347	2,485,017	1,050,000
March	139	2,320,766	1,521,819	2,725,235	3,433,333
April	150	2,646,487	3,225,304	3,040,914	6,148,673
May	155	3,215,669	4,077,375	3,629,800	8,947,536
June	166	3,966,204	6,061,902	4,608,145	17,434,831
July	172	4,409,018	6,961,180	4,874,112	23,471,700
Aug	169	3,645,882	6,761,011	4,334,365	22,808,887
Sept	151	3,148,523	3,162,559	3,712,293	5,710,330
Oct	147	2,520,077	2,661,986	2,899,419	5,677,271
Nov	139	2,268,928	1,612,280	2,596,201	2,166,000
Dec	137	2,284,835	1,527,195	2,631,587	2,130,000

Operations:

178 total operations
 130 livestock
 43 irrigation
 5 aquaculture

Daily Withdrawal Capacity (incl. ground and surface):

48,407,532 (gallons)

2004

Month	# Operations	Total Avg Daily Ground	Total Avg. Daily Surface	Total Max Daily Ground	Total Max Daily Surface
		<i>(gallons)</i>	<i>(gallons)</i>	<i>(gallons)</i>	<i>(gallons)</i>
Jan	143	2,318,084	1,184,122	2,444,284	1,222,330
Feb	146	2,057,311	1,326,003	2,192,300	1,346,860
March	151	2,737,804	1,877,520	2,851,725	1,936,841
April	156	3,888,190	6,806,312	4,111,880	7,553,560
May	157	3,763,145	7,554,191	4,102,039	8,492,632
June	161	5,667,627	9,344,743	6,564,263	10,171,032
July	162	4,506,399	16,043,319	5,146,324	19,805,936
Aug	156	3,944,526	9,164,300	4,674,028	12,011,548
Sept	149	2,844,583	3,162,966	2,956,769	3,928,645
Oct	150	2,477,553	2,849,072	2,634,662	3,265,001
Nov	144	2,276,544	2,365,372	2,452,417	2,601,470
Dec	143	2,247,244	1,853,641	2,374,862	2,092,330

Operations:

- 170 total operations
- 136 livestock
- 34 irrigation
- 4 aquaculture

Daily Withdrawal Capacity (incl. ground and surface):

46,402,777 (gallons)



Craven - Water Use by Month 2005

Month	# Operations	Avg. # Days Ground	Avg. # Days Surface	Total Avg. Daily Ground (gallons)	Total Avg. Daily Surface (gallons)	Total Max Daily Ground (gallons)	Total Max Daily Surface (gallons)
Jan	*	*	*	*	*	*	*
Feb	*	*	*	*	*	*	*
March	3	13	*	138,684	*	160,114	*
April	5	18	*	125,073	*	149,073	*
May	*	*	*	*	*	*	*
June	6	24	16	103,970	577,500	113,303	641,500
July	7	18	*	81,471	*	171,472	*
Aug	6	18	*	150,155	*	174,156	*
Sept	*	*	*	*	*	*	*
Oct	*	*	*	*	*	*	*
Nov	*	*	*	*	*	*	*
Dec	*	*	*	*	*	*	*

Operations:

5 total operations

5 livestock and irrigation

* disclosure - one operation is greater than 60% of total OR less than 3 operations

Daily Withdrawal Capacity (incl. ground and surface):

1,794,823 (gallons)

Duplin - Water Use by Month 2005

Month	# Operations	Avg. # Days Ground	Avg. # Days Surface	Total Avg. Daily Ground (gallons)	Total Avg. Daily Surface (gallons)	Total Max Daily Ground (gallons)	Total Max Daily Surface (gallons)
Jan	74	30	*	1,051,736	*	1,241,783	*
Feb	74	27	*	1,184,789	*	1,282,671	*
March	74	30	*	1,163,523	*	1,451,277	*
April	74	30	*	1,176,675	*	1,418,390	*
May	74	31	*	1,252,784	*	1,402,704	*
June	74	30	*	1,417,762	*	1,673,551	*
July	74	31	*	1,840,767	*	1,954,331	*
Aug	77	31	*	1,623,598	*	1,959,535	*
Sept	76	29	*	1,587,400	*	1,897,991	*
Oct	73	31	*	1,301,812	*	1,453,312	*
Nov	74	29	*	1,109,545	*	1,277,961	*
Dec	74	30	*	1,124,004	*	1,288,234	*

Operations:

72 total operations

72 livestock

* disclosure - one operation is greater than 60% of total OR less than 3 operations

Daily Withdrawal Capacity (incl. ground and surface):

5,509,490 (gallons)

Greene - Water Use by Month 2005

Month	# Operations	Avg. # Days Ground	Avg. # Days Surface	Total Avg. Daily Ground (gallons)	Total Avg. Daily Surface (gallons)	Total Max Daily Ground (gallons)	Total Max Daily Surface (gallons)
Jan	9	31	*	287,776	*	322,708	*
Feb	9	28	*	306,840	*	327,716	*
March	10	31	*	300,191	*	324,066	*
April	10	30	*	282,163	*	308,387	*
May	11	31	*	287,520	*	314,463	*
June	12	30	*	*	*	*	*
July	11	31	*	327,111	*	354,477	*
Aug	11	31	*	315,875	*	349,272	*
Sept	11	30	*	319,437	*	341,969	*
Oct	10	31	*	292,277	*	320,148	*
Nov	10	30	*	293,652	*	318,826	*
Dec	10	31	*	301,125	*	323,401	*

Operations:

14 total operations

10 livestock

4 irrigation and aquaculture

* disclosure - one operation is greater than 60% of total OR less than 3 operations

Daily Withdrawal Capacity (incl. ground and surface):

1,991,828 (gallons)

Jones - Water Use by Month 2005

Month	# Operations	Avg. # Days Ground	Avg. # Days Surface	Total Avg. Daily Ground (gallons)	Total Avg. Daily Surface (gallons)	Total Max Daily Ground (gallons)	Total Max Daily Surface (gallons)
Jan	9	31	*	128,283	*	158,738	*
Feb	9	28	*	139,387	*	152,942	*
March	9	31	*	123,115	*	150,258	*
April	9	30	*	127,000	*	147,443	*
May	9	31	*	169,533	*	172,754	*
June	9	30	*	180,699	*	214,909	*
July	9	31	*	262,969	*	281,234	*
Aug	9	31	*	203,997	*	264,371	*
Sept	9	30	*	176,203	*	209,971	*
Oct	9	31	*	192,445	*	203,314	*
Nov	9	30	*	167,589	*	193,552	*
Dec	9	31	*	170,103	*	206,538	*

Operations:

9 total operations

9 livestock

* disclosure - one operation is greater than 60% of total OR less than 3 operations

Daily Withdrawal Capacity (incl. ground and surface):

356,973 (gallons)

Lenoir- Water Use by Month 2005

Month	# Operations	Avg. # Days Ground	Avg. # Days Surface	Total Avg. Daily Ground (gallons)	Total Avg. Daily Surface (gallons)	Total Max Daily Ground (gallons)	Total Max Daily Surface (gallons)
Jan	*	*	*	*	*	*	*
Feb	*	*	*	*	*	*	*
March	3	31	*	45,226	*	47,397	*
April	*	*	*	*	*	*	*
May	9	22	*	613,996	*	618,183	*
June	9	22	*	823,615	*	824,240	*
July	9	22	*	834,920	*	876,769	*
Aug	*	*	*	*	*	*	*
Sept	5	28	*	64,133	*	111,544	*
Oct	5	28	*	62,012	*	107,661	*
Nov	3	30	*	50,497	*	55,460	*
Dec	3	31	*	48,519	*	54,515	*

Operations:

4 total operations

4 livestock and irrigation

* disclosure - one operation is greater than 60% of total OR less than 3 operations

Daily Withdrawal Capacity (incl. ground and surface):

4,901,000 (gallons)

Pitt - Water Use by Month 2005

Month	# Operations	Avg. # Days Ground	Avg. # Days Surface	Total Avg. Daily Ground (gallons)	Total Avg. Daily Surface (gallons)	Total Max Daily Ground (gallons)	Total Max Daily Surface (gallons)
Jan	8	31	*	52,477	*	53,378	*
Feb	8	28	*	61,714	*	61,794	*
March	8	31	*	70,690	*	71,178	*
April	8	30	*	58,210	*	58,303	*
May	9	31	*	56,717	*	58,876	*
June	10	28	*	164,279	*	166,776	*
July	13	27	9	90,471	807,294	95,418	2,288,140
Aug	12	27	10	82,971	478,634	87,328	1,464,279
Sept	8	30	*	77,266	*	79,300	*
Oct	8	31	*	57,323	*	57,811	*
Nov	9	30	*	59,703	*	59,704	*
Dec	8	31	*	63,448	*	63,937	*

Operations:

13 total operations

6 livestock

7 irrigation and aquaculture

* disclosure - one operation is greater than 60% of total OR less than 3 operations

Daily Withdrawal Capacity (incl. ground and surface):

2,158,019 (gallons)

Washington - Water Use by Month 2005

Month	# Operations	Avg. # Days Ground	Avg. # Days Surface	Total Avg. Daily Ground (gallons)	Total Avg. Daily Surface (gallons)	Total Max Daily Ground (gallons)	Total Max Daily Surface (gallons)
Jan	8	31	*	86,061	*	86,069	*
Feb	8	28	*	92,343	*	92,343	*
March	8	31	*	113,179	*	113,187	*
April	8	30	*	84,663	*	84,663	*
May	8	31	*	86,735	*	86,743	*
June	8	30	*	114,123	*	114,123	*
July	8	31	*	108,274	*	108,282	*
Aug	8	31	*	128,470	*	128,478	*
Sept	8	30	*	159,408	*	159,408	*
Oct	8	31	*	93,379	*	93,387	*
Nov	8	30	*	91,839	*	91,839	*
Dec	8	31	*	87,816	*	87,824	*

Operations:

8 total operations

8 livestock

* disclosure - one operation is greater than 60% of total OR less than 3 operations

Daily Withdrawal Capacity (incl. ground and surface):

172,866 (gallons)

Wayne - Water Use by Month 2005

Month	# Operations	Avg. # Days Ground	Avg. # Days Surface	Total Avg. Daily Ground (gallons)	Total Avg. Daily Surface (gallons)	Total Max Daily Ground (gallons)	Total Max Daily Surface (gallons)
Jan	15	31	*	255,414	*	284,755	*
Feb	15	28	*	264,067	*	296,372	*
March	15	31	*	282,823	*	298,205	*
April	17	30	*	271,233	*	310,352	*
May	17	31	*	293,865	*	371,912	*
June	19	30	*	434,897	*	463,055	*
July	19	31	*	406,932	*	505,002	*
Aug	17	31	*	383,632	*	477,873	*
Sept	16	30	*	420,345	*	489,203	*
Oct	16	31	*	274,729	*	327,783	*
Nov	15	30	*	269,996	*	318,055	*
Dec	15	31	*	308,318	*	366,210	*

Operations:

16 total operations

16 livestock and aquaculture

* disclosure - one operation is greater than 60% of total OR less than 3 operations

Daily Withdrawal Capacity (incl. ground and surface):

1,564,920 (gallons)

Other Counties - Water Use by Month 2005¹

Month	# Operations	Total Avg. Daily Ground	Total Avg. Daily Surface	Total Max Daily Ground	Total Max Daily Surface
		<i>(gallons)</i>	<i>(gallons)</i>	<i>(gallons)</i>	<i>(gallons)</i>
Jan	10	184,368	544,887	248,058	1,210,767
Feb	11	168,207	616,347	209,313	1,050,000
March	6	28,594	1,521,818	52,057	3,433,333
April	16	409,990	3,225,304	422,684	6,148,673
May	15	339,334	4,077,375	416,374	8,947,536
June	16	619,450	5,484,402	918,088	16,793,331
July	19	341,256	6,153,885	381,178	21,183,560
Aug	26	646,139	6,282,376	700,814	21,344,608
Sept	15	236,020	3,162,559	290,436	5,710,329
Oct	15	157,408	2,661,986	212,978	5,677,271
Nov	8	166,414	1,612,280	216,500	2,166,000
Dec	7	122,920	1,527,195	177,753	2,130,000

Operations:

33 total operations

3 livestock and aquaculture

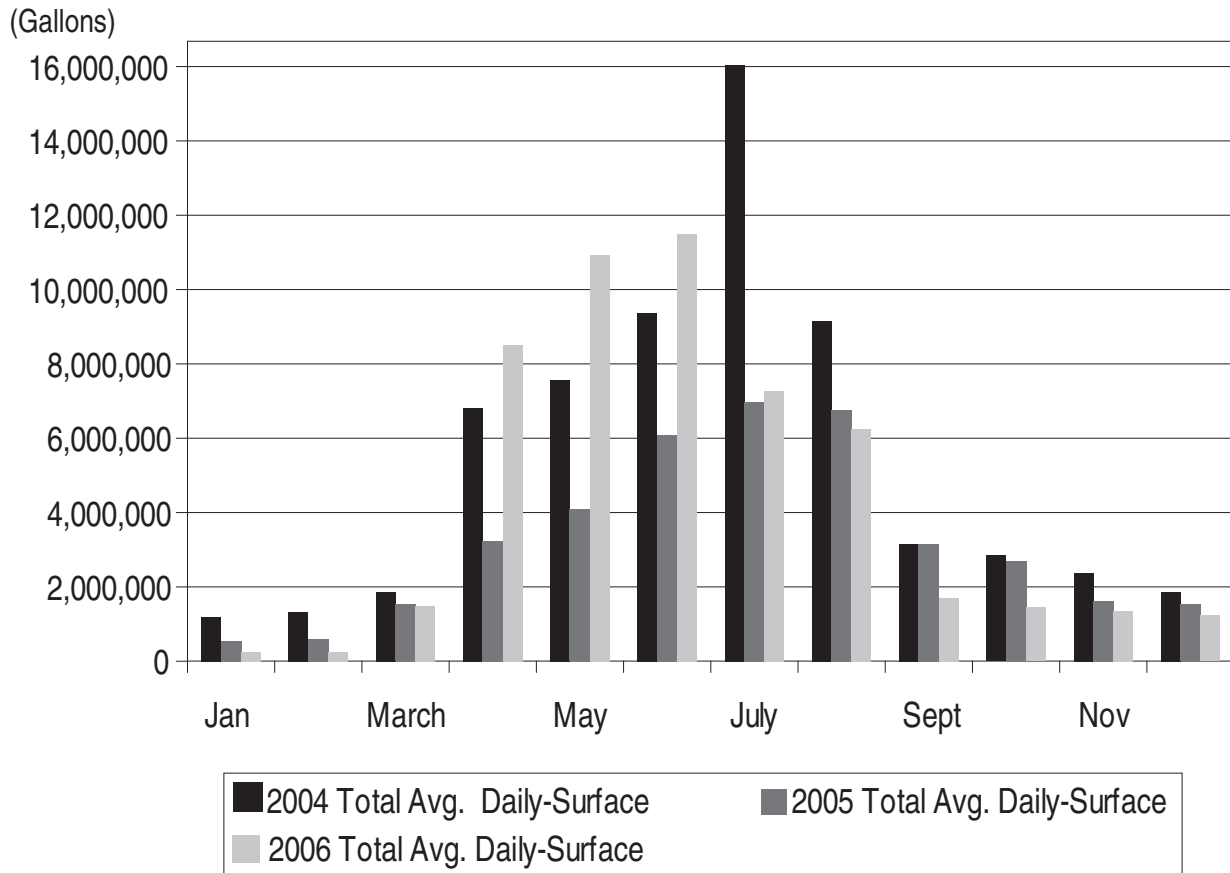
30 irrigation

Daily Withdrawal Capacity (incl. ground and surface):

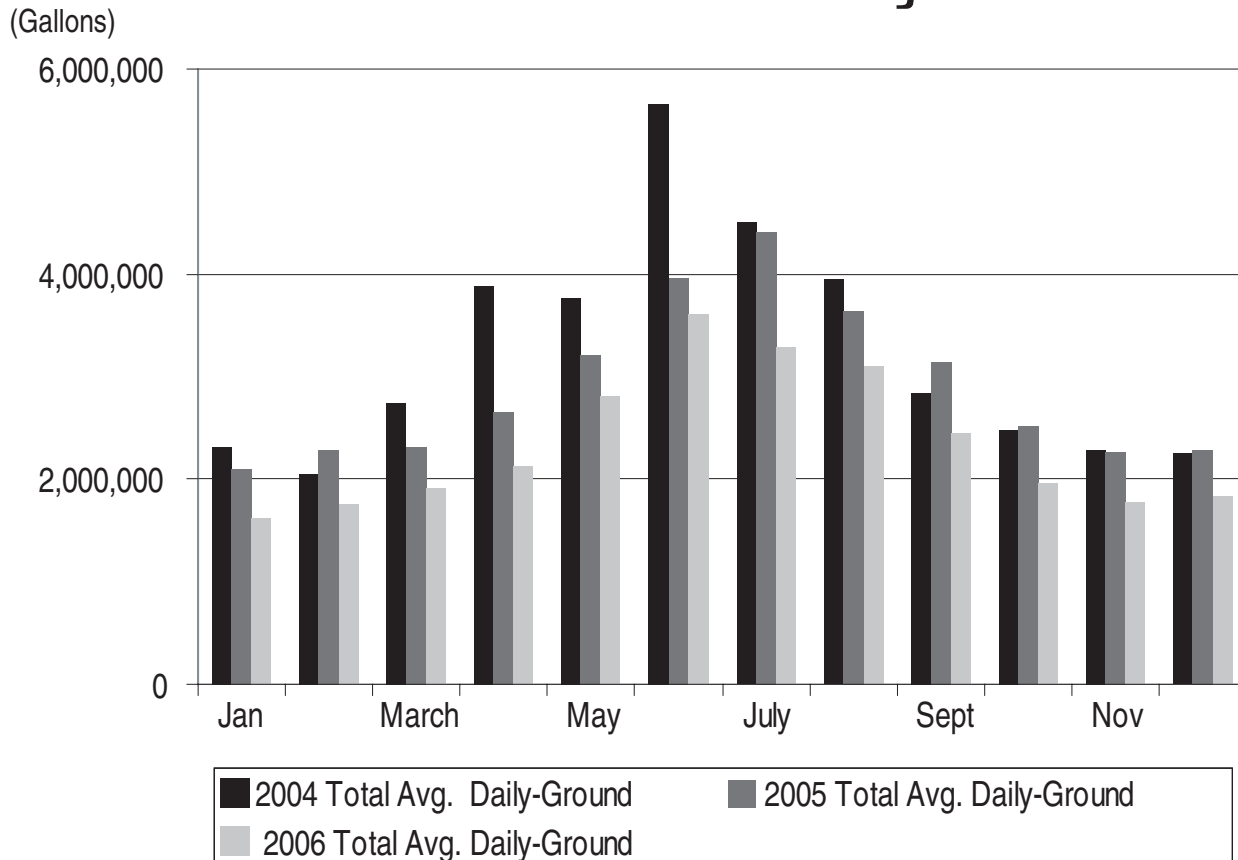
29,493,933 (gallons)

¹ Other Counties include all data for Beaufort, Carteret, Edgecombe, Martin, Onslow, Pamlico, and Wilson as well as non-disclosed data from the published counties.

Central Coastal Plain Water-Usage Surface



Central Coastal Plain Water-Usage Ground



Beaufort - Water Use by Month 2006

Month	# Operations	Avg. # Days Ground	Avg. # Days Surface	Total Avg. Daily Ground (gallons)	Total Avg. Daily Surface (gallons)	Total Max Daily Ground (gallons)	Total Max Daily Surface (gallons)
Jan	3	31	*	54,435	*	54,536	*
Feb	3	28	*	59,854	*	60,862	*
March	3	31	*	53,729	*	53,885	*
April	3	30	*	57,733	*	58,186	*
May	3	31	*	59,929	*	73,092	*
June	*	30	*	*	*	*	*
July	3	31	*	75,568	*	89,944	*
Aug	3	31	*	74,610	*	94,493	*
Sept	3	30	*	67,947	*	75,779	*
Oct	3	31	*	62,652	*	72,579	*
Nov	3	30	*	61,520	*	72,530	*
Dec	3	31	*	57,648	*	74,333	*

Operations:

3 total operations

3 livestock and irrigation

* disclosure - one operation is greater than 60% of total OR less than 3 operations

Daily Withdrawal Capacity (incl. ground and surface):

43,680 (gallons)

Duplin - Water Use by Month 2006

Month	# Operations	Avg. # Days Ground	Avg. # Days Surface	Total Avg. Daily Ground (gallons)	Total Avg. Daily Surface (gallons)	Total Max Daily Ground (gallons)	Total Max Daily Surface (gallons)
Jan	70	30	*	917,298	*	1,085,050	*
Feb	70	28	*	1,015,027	*	1,169,835	*
March	70	30	*	1,074,485	*	1,338,801	*
April	70	30	*	1,071,207	*	1,288,688	*
May	70	31	*	1,133,097	*	1,275,547	*
June	71	30	*	1,373,402	*	1,555,663	*
July	71	31	*	1,634,169	*	1,736,757	*
Aug	71	30	*	1,478,702	*	1,751,326	*
Sept	71	30	*	1,373,913	*	1,588,331	*
Oct	70	31	*	1,125,791	*	1,258,856	*
Nov	70	29	*	981,791	*	1,126,313	*
Dec	70	30	*	991,259	*	1,148,148	*

Operations:

71 total operations

68 livestock

3 irrigation

* disclosure - one operation is greater than 60% of total OR less than 3 operations

Daily Withdrawal Capacity (incl. ground and surface):

3,629,249 (gallons)

Greene - Water Use by Month 2006

Month	# Operations	Avg. # Days Ground	Avg. # Days Surface	Total Avg. Daily Ground (gallons)	Total Avg. Daily Surface (gallons)	Total Max Daily Ground (gallons)	Total Max Daily Surface (gallons)
Jan	7	31	*	86,378	*	98,452	*
Feb	7	29	*	92,460	*	104,572	*
March	7	31	*	97,892	*	101,061	*
April	8	27	*	385,135	*	390,349	*
May	8	28	*	391,347	*	401,152	*
June	8	27	*	447,399	*	595,601	*
July	7	31	*	125,303	*	134,085	*
Aug	7	31	*	123,824	*	146,283	*
Sept	7	30	*	127,234	*	131,855	*
Oct	7	31	*	94,265	*	99,930	*
Nov	7	30	*	92,500	*	98,056	*
Dec	7	31	*	100,162	*	105,191	*

Operations:

8 total operations

9 livestock and irrigation

* disclosure - one operation is greater than 60% of total OR less than 3 operations

Daily Withdrawal Capacity (incl. ground and surface):

3,786,966 (gallons)

Jones - Water Use by Month 2006

Month	# Operations	Avg. # Days Ground	Avg. # Days Surface	Total Avg. Daily Ground (gallons)	Total Avg. Daily Surface (gallons)	Total Max Daily Ground (gallons)	Total Max Daily Surface (gallons)
Jan	9	31	*	118,518	*	120,664	*
Feb	9	28	*	116,477	*	125,293	*
March	9	31	*	147,480	*	147,852	*
April	9	30	*	131,590	*	133,408	*
May	9	31	*	139,629	*	143,968	*
June	9	30	*	218,011	*	218,062	*
July	9	31	*	195,933	*	200,520	*
Aug	9	31	*	195,882	*	204,652	*
Sept	9	30	*	205,530	*	205,540	*
Oct	9	31	*	143,387	*	145,509	*
Nov	9	30	*	144,660	*	148,575	*
Dec	9	31	*	168,033	*	168,200	*

Operations:

9 total operations

9 livestock

* disclosure - one operation is greater than 60% of total OR less than 3 operations

Daily Withdrawal Capacity (incl. ground and surface):

304,658 (gallons)

Pitt - Water Use by Month 2006

Month	# Operations	Avg. # Days Ground	Avg. # Days Surface	Total Avg. Daily Ground (gallons)	Total Avg. Daily Surface (gallons)	Total Max Daily Ground (gallons)	Total Max Daily Surface (gallons)
Jan	4	31	*	43,337	*	44,748	*
Feb	4	28	*	45,530	*	47,034	*
March	4	31	*	49,774	*	50,278	*
April	4	30	*	53,367	*	53,370	*
May	4	31	*	50,897	*	53,286	*
June	5	28	*	138,280	*	140,723	*
July	4	31	*	61,213	*	66,926	*
Aug	4	31	*	64,219	*	68,669	*
Sept	4	30	*	65,793	*	67,807	*
Oct	4	31	*	45,681	*	50,708	*
Nov	4	30	*	40,947	*	43,467	*
Dec	3	31	*	37,300	*	40,850	*

Operations:

5 total operations

5 livestock and aquaculture

* disclosure - one operation is greater than 60% of total OR less than 3 operations

Daily Withdrawal Capacity (incl. ground and surface):

421,112 (gallons)

Washington - Water Use by Month 2006

Month	# Operations	Avg. # Days Ground	Avg. # Days Surface	Total Avg. Daily Ground (gallons)	Total Avg. Daily Surface (gallons)	Total Max Daily Ground (gallons)	Total Max Daily Surface (gallons)
Jan	8	31	*	75,340	*	75,347	*
Feb	8	28	*	72,217	*	77,383	*
March	8	31	*	84,429	*	84,437	*
April	8	30	*	62,914	*	62,921	*
May	8	31	*	63,977	*	63,986	*
June	8	30	*	117,539	*	117,546	*
July	8	31	*	101,061	*	101,069	*
Aug	8	31	*	121,397	*	121,404	*
Sept	8	30	*	158,980	*	158,987	*
Oct	8	31	*	93,513	*	93,521	*
Nov	8	30	*	74,478	*	74,485	*
Dec	8	31	*	90,661	*	90,671	*

Operations:

8 total operations

8 livestock

* disclosure - one operation is greater than 60% of total OR less than 3 operations

Daily Withdrawal Capacity (incl. ground and surface):

169,003 (gallons)

Wayne- Water Use by Month 2006

Month	# Operations	Avg. # Days Ground	Avg. # Days Surface	Total Avg. Daily Ground (gallons)	Total Avg. Daily Surface (gallons)	Total Max Daily Ground (gallons)	Total Max Daily Surface (gallons)
Jan	14	31	*	234,562	*	261,546	*
Feb	14	28	*	262,027	*	296,996	*
March	14	31	*	279,986	*	283,746	*
April	14	30	*	276,658	*	340,353	*
May	14	31	*	288,231	*	347,539	*
June	14	30	*	429,469	*	458,044	*
July	14	31	*	356,148	*	438,223	*
Aug	14	31	*	339,727	*	444,308	*
Sept	14	30	*	339,557	*	376,801	*
Oct	14	31	*	276,342	*	329,813	*
Nov	14	30	*	262,742	*	311,115	*
Dec	14	31	*	277,596	*	315,609	*

Operations:

14 total operations

14 livestock

* disclosure - one operation is greater than 60% of total OR less than 3 operations

Daily Withdrawal Capacity (incl. ground and surface):

1,152,920 (gallons)

Other Counties - Water Use by Month 2006 ¹

Month	# Operations	Total Avg. Daily Ground (gallons)	Total Avg. Daily Surface (gallons)	Total Max Daily Ground (gallons)	Total Max Daily Surface (gallons)
Jan	7	95,177	240,000	107,685	265,000
Feb	9	100,247	256,071	121,487	265,000
March	12	121,905	1,492,290	148,328	1,826,000
April	18	87,400	8,497,226	581,270	8,836,997
May	22	672,544	10,921,663	1,190,407	11,322,864
June	26	888,731	11,492,957	1,220,841	11,963,968
July	23	728,404	7,275,989	731,709	7,946,027
Aug	24	709,113	6,236,063	722,131	7,277,182
Sept	13	114,153	1,719,842	126,160	1,756,979
Oct	11	120,085	1,431,682	139,193	1,461,905
Nov	9	110,653	1,351,995	124,439	1,372,611
Dec	8	105,229	1,251,421	163,290	1,276,777

Operations:

30 total operations

6 livestock

26 irrigation and aquaculture

Daily Withdrawal Capacity (incl. ground and surface):

42,884,888 (gallons)

¹ Other counties include all data for Carteret, Craven, Edgecombe, Lenoir, Martin, Onslow, Pamlico, and Wilson as well as non-disclosed data from the published counties.

Department of Environment and Natural Resources

Water Use Exceeding 100,000 Gallons Per Day¹

(permit required)

Farmers that use in excess of 100,000 gallons of ground water in any one day are required to obtain a permit from the Department of Environment and to obtain a permit from the Department of Environment and Natural Resources.

Permits Issued 2006:

26 aquaculture operations with 37,397,440 gallons per day permitted capacity and withdrawals totaling 1,391,021,700 gallons reported in 2006.

25 agricultural irrigation operations² with 32,694,021 gallons per day permitted capacity and withdrawals totaling 459,314,578 gallons reported in 2006.

Permits Issued 2005:

26 aquaculture operations with 37,397,440 gallons per day permitted capacity and withdrawals totaling 1,553,136,275 gallons reported in 2005.

25 agricultural irrigation operations² with 32,694,021 gallons per day permitted capacity and withdrawals totaling 575,733,171 gallons reported in 2005.

¹ *Data supplied by Department of Environment and Natural Resources. The data is for calendar years 2006 and 2005.*

² *Includes operations with a combination of irrigation, aquaculture and/or livestock.*

The Central Coastal Plain Water Use Area (CCPCUA)

