



Outdoor Education

North Carolina's system of Educational State Forests has been developed for use as living outdoor classrooms to teach children and the public that forests are complex, interdependent ecosystems, which can be managed for a diversity of uses on a sustainable basis.

Ranger conducted classes are available to groups of 10 or more people visiting the forest. These classes have been correlated to meet various science and social studies curriculum guidelines. Instructors' activity packets and special study sites are available to assist teachers or other group leaders in using the forest as an outdoor classroom.

Project Learning Tree, Project Wet, and "Investigating Your Environment" workshops are available for teachers, natural resource professionals or other group leaders. Call the office to schedule classes or check workshop schedules.

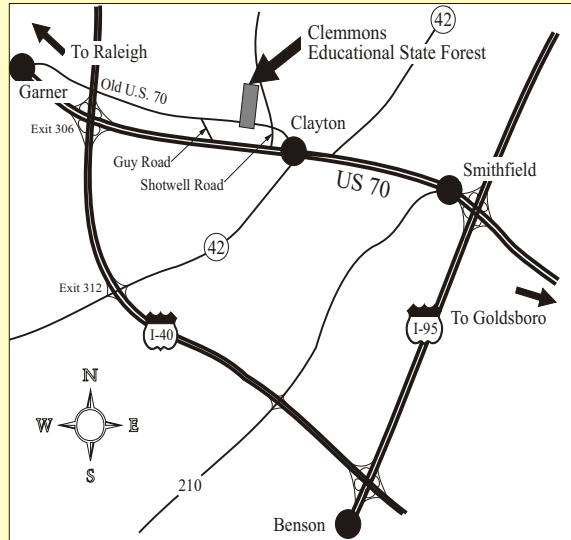
Picnic Facilities

Be sure to bring a picnic lunch with you. Picnic sites with tables and grills are available. A spacious picnic shelter, complete with a massive stone fireplace, is available for groups. Reservations for the shelter are required.



The forest at a glance-

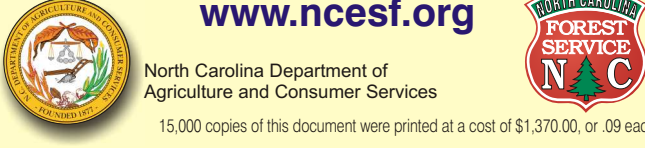
- Outdoor Education
 - Workshops
 - Picnic Facilities
 - Water Quality Classroom
 - River Basin Deck
 - Ranger-Conducted Classes
 - Trails
- Forest Geology Trail with "Talking Rocks"*
Talking Tree Trail
Forest Demonstration Trail



Forest Season

Mid-March to Mid-November
 Closed Mondays
 Tues. - Fri. 9:00-5:00
 Sat. & Sun. 11:00-5:00 EST
 11:00-8:00 DST

Phone: (919) 553-5651
ClemmonsESF.DFR@ncagr.gov
2411 Old US 70 West, Clayton, NC 27520
www.ncesf.org



15,000 copies of this document were printed at a cost of \$1,370.00, or .09 each.

CLEMMONS

Educational State Forest



Welcome to Clemmons Educational State Forest, a unique outdoors experience! Located between the Piedmont and the Coastal Plain, Clemmons' pine stands and hardwoods are set on pleasant, rolling terrain highlighted by streams and rock formations. These features are accessible by a series of well-marked trails, accented by exhibits and displays depicting the ecology of a managed forest.

Wildlife - Every year, staff at Clemmons ESF conduct prescribed burns to maintain areas of open forest and promote young, new vegetation for wildlife. This also reduces the amount of debris on the ground that can build up and become a risk for wildfire. Mature trees can tolerate small, controlled fires, but large, unplanned fires can damage them. There are also small, open areas where we plant special grasses and vegetation that wildlife like to eat; these areas are called "food plots."

Soil - Across the forest, we install and maintain best management practices, or BMPs, to prevent from washing away into the pond and streams. Keeping the soil in place also adds to the soil's ability to grow trees.

Water - The cleanest water comes from forest streams and there are more than 800 acres of forest at Clemmons ESF. To ensure that water stays clean, we use Streamside Management Zones (SMZs). These are areas near a stream where extra caution is used during logging and other forestry work to protect water quality.

Timber - Some areas of this forest are managed for sustainable timber production. The money received from this timber helps to pay for the upkeep and maintenance of the forest. Our timber helps to support the local economy. Wouldn't you rather build your home from wood that comes from your own community or state, rather than wood shipped in from another country? Think of how much extra fuel that would use! This forest, like all working forests, pay for themselves to be replanted so your children will continue to enjoy beautiful places like Clemmons ESF.



About Forest Management
 Clemmons Educational State Forest (ESF) is a place of many types of resources: timber, water, soil and wildlife. For each of these resources, a special plan has been developed.

In 1976, the nursery operation moved to Goldsboro and the Division of Forest Resources created North Carolina's first Educational State Forest in Clayton. As you walk the trails here at Clemmons Educational State Forest you will observe the past, present and future of the forest. Young stands of longleaf pine you see today will soon grow to resemble the forests that were here hundreds of years ago.

Throughout the forest faint, furrows can still be seen, testimony to the farming practiced in the early 20th century. Eventually, soil erosion ended the farming and in the 1930's the Civilian Conservation Corp moved onto the land and constructed a nursery, which was then turned over to the N.C. Division of Forest Resources. As time passed, a mixture of pine and hardwoods grew to dominate a landscape that had once been a longleaf pine savannah.



Amid the trees and undergrowth of Clemmons Educational State Forest lurk clues to the land's past. Old Longleaf pine stumps bear the scars of a practice known as "boxing" - a method of collecting sap for use in the construction of wooden ships. From the Colonial period until the end of the 19th century sap from the trees was used to make resin, pitch, turpentine, and tar, which sealed the hulls of wooden boats and ships.

Forest History

The North Carolina Division of Forest Resources is an equal opportunity/affirmative action employer. Its programs, activities and employment practices are available to all people regardless of race, color, religion, sex, age, national origin, handicap or political affiliation.



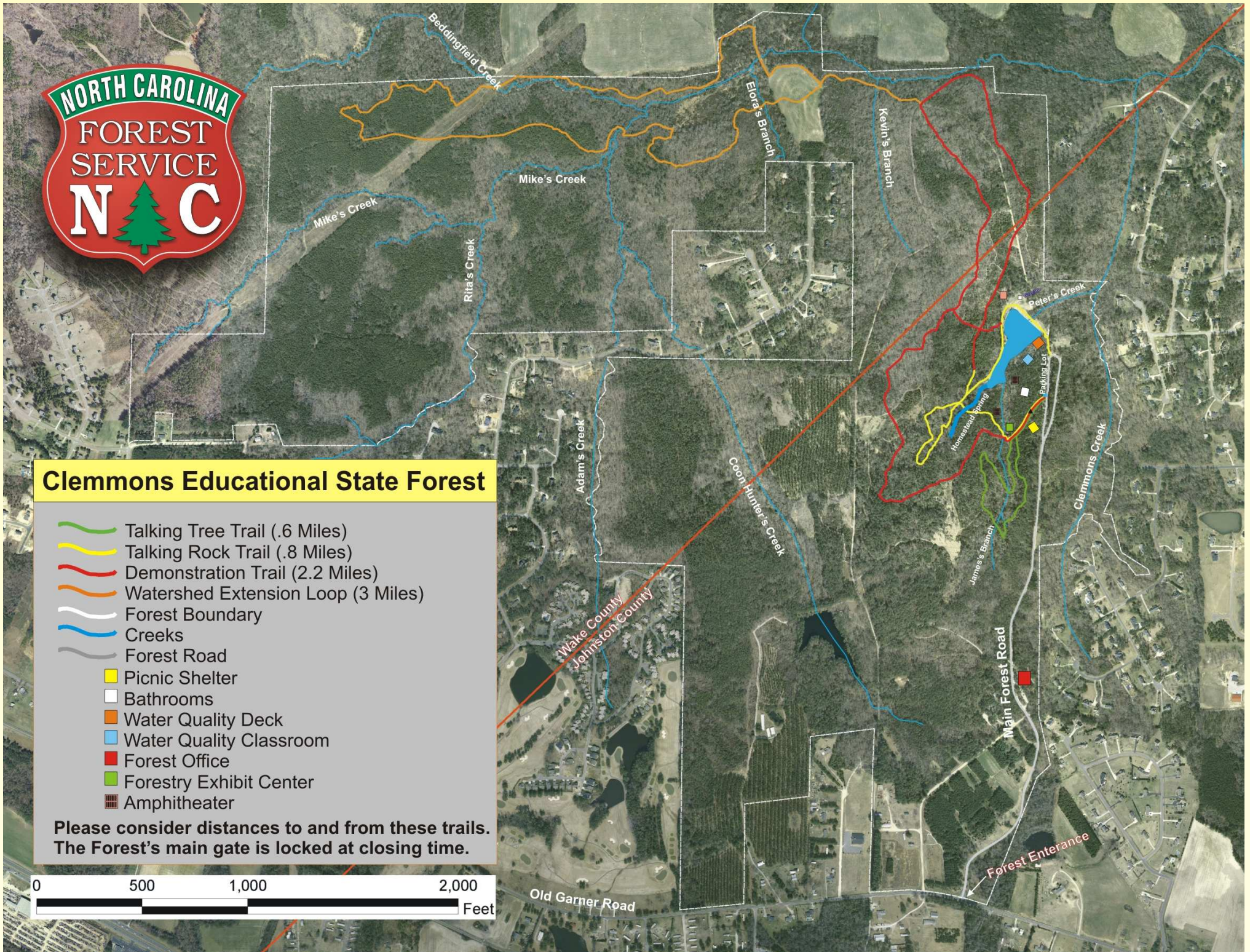
REMEMBER, ONLY YOU...

- Obey posted speed limits on the roads.
- Keep pets on a leash while at the forest.
- Remember to pick up after your pet. Pet waste bags are provided if you do not have your own.
- Do NOT remove or pick plants or flowers.
- No alcoholic beverages allowed.
- No firearms allowed.
- Fires are only permitted in grills, fireplaces and fire pits.
- No bicycles or motorized vehicles are allowed on the trails.

We are glad you have decided to join us here at Clemmons Educational State Forest. If we all observe a few rules, the forest experience will be more enjoyable for everyone:

Use of the Forest (Rules)

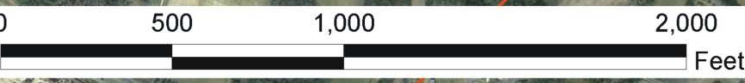
Check with a ranger or the posted signs for a complete listing of rules and regulations.



Clemmons Educational State Forest

- Talking Tree Trail (.6 Miles)
- Talking Rock Trail (.8 Miles)
- Demonstration Trail (2.2 Miles)
- Watershed Extension Loop (3 Miles)
- Forest Boundary
- Creeks
- Forest Road
- Picnic Shelter
- Bathrooms
- Water Quality Deck
- Water Quality Classroom
- Forest Office
- Forestry Exhibit Center
- Amphitheater

Please consider distances to and from these trails. The Forest's main gate is locked at closing time.



Talking Tree Trail

At Clemmons Educational State Forest, visitors can listen to the wind in the trees or they can listen to the trees tell a story. The Talking Tree Trail features recorded messages about the tree, its site and the forest's history. Access this trail from the main parking lot and follow the green trail markers.



Forest Demonstration Trail



The Forest Demonstration Trail is the longest on the forest at more than 2 miles, although you can cut your distance in half by taking the short-cut marked on the map. This trail offers demonstrations and examples of actual forestry practices. There is also a demonstration of equipment used to control wildfires. Follow the red trail markers for this trail.



River Basin Deck & Water Quality Classroom

Visit this exhibit to learn more about North Carolina's water resources. The River Basin Deck features a large map, with the 17 river basins of North Carolina painted into its surface. You will find educational signs at the deck and along the short trail that leads up to the Water Quality Classroom. The classroom is used for school groups that come to the forest for water quality classes facilitated by an educational ranger.

Contact an educational forest ranger to learn how your school or group can participate in one of the many classes at Clemmons Educational State Forest.

Forest Geology Trail

Like the Talking Tree Trail, the Forest Geology Trail has 'talking rocks' that explain the geology and soils of the forest. This scenic trail also features a boardwalk that overlooks a spring that feeds the pond. Follow the yellow trail markers to get to this trail.



Deck showing North Carolina's river basins.