

FINANCIAL ASSISTANCE PROGRAM

N.C. Forest Service Urban and Community Forestry



The Urban and Community Forestry (U&CF) Program offers financial assistance to governmental agencies and organizations to complete urban and community forestry projects. A Request for Applications (RFA) process is offered several times a year to help you plan and apply for these assistance opportunities. This fact sheet summarizes the program. Visit our [Financial Assistance Program webpage](#) and companion pages for detailed information and RFA offerings.

Current Funding Programs

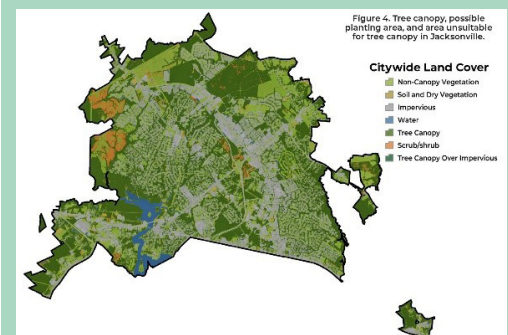
We receive funding from various sources, and each has its own set of requirements and activities that can be funded. Each RFA will detail all the information needed to apply for the funding program being offered.

- Inflation Reduction Act Program – Provides 100% funding for U&CF projects located in Climate and Economic Justice Screening Tool census tracts including tree maintenance and tree planting.
- Inventories, Assessments and Management Plans Program – Provides 50% cost share and 100% funding to complete these practices.
- Cost and Match Share Program – Provides 50% cost and match share funding to complete eligible project objectives.

Eligible Projects

There are seven eligible project objectives. Highlights include the following.

- Outreach, Training and Education -- Development and delivery of outreach of outreach, education and training products and events to educate, inform and engage the community in urban and community forestry.
- Inventories and Assessments -- Resource inventories, assessments, program reviews and surveys.
- Tree Planting and Maintenance -- Development and completion of tree planting and maintenance projects.
- Plans and Ordinances -- Development of urban and community forestry plans and local ordinances defining local government's role in managing the urban forest.



Financial Assistance Structure

Awardees will enter an agreement/contract with the N.C. Forest Service or partner to complete the work within an agreed duration and will be reimbursed for approved expenses. For most of our programs, there are two agreement structures: cost share and match share.

Cost Share -- The awardee pays a service provider to complete the services.

- The awardee will be reimbursed the percentage cost share, for example 50%, offered by the specific RFA. Only purchased goods and services related to completion of the project are eligible for reimbursement.

Match Share -- A match share structure allows for direct in-kind contributions instead of monetary contributions for managing and completing the project. Examples of direct in-kind contributions include dollar value of employee time, volunteer time and donated goods or services.

- Only disadvantaged communities and 501c3 not-for-profit organizations are eligible for match share.
 - » Disadvantaged Communities Definitions
 - A tribal government or governing agency located within a N.C. Department of Commerce Tier 1 Distressed County.
 - Governing agencies that straddle a Tier 1 County.
 - 501c3 not-for-profit organizations.
 - Project, in its entirety, occurs within a disadvantaged census tract as defined by the Climate and Economic Justice Screening Tool.

How and when do I apply?

Design Your Project. Complete a project planning process that will result in the following six outcomes: project needs statement, project goal, project objectives, project team, project work plan and project budget. Project planning tools and program documents can be found on our webpage.

Request for Applications. There will be regularly scheduled offerings Jan. 1 and July 1 each year, however there may be additional special offerings between these dates. RFAs will be advertised as well as posted on our webpage.

Review and Award. At the end of each application period, applications are reviewed for completeness, prerequisite requirements, readiness for implementation and contribution to U&CF management in the community. Incomplete applications or those failing to meet prerequisites will be disqualified. Within each respective RFA, acceptable applications will be scored, ranked and awarded based on rank and available funding.



Stay connected.

Sign up for the latest news
and updates from the
N.C. Forest Service.

Contact your NCFS county ranger. | ncforestservice.gov/contacts

Urban & Community Forestry | 919-857-4801 | ncforestservice.gov

The N.C. Forest Service is a division of the N.C. Department of Agriculture and Consumer Services | Steve Troxler, Commissioner
The N.C. Forest Service is an equal opportunity/affirmative action employer. Its programs, activities and employment practices are available to all people regardless of race, color, religion, sex, age, national origin, handicap or political affiliation. This publication was made possible through a grant from the U.S. Forest Service. This is a "print-as-needed" document available at N.C. Forest Service offices and at www.ncforestservice.gov. 04/24

