

Emerald Ash Borer (EAB) Making Treatment or Removal Decisions

Trees can be **treated** if the trees are:

1. valuable to the owner
2. important to the landscape
3. healthy and vigorous, with over 1/2 their leaves
4. showing few external signs of EAB infestation



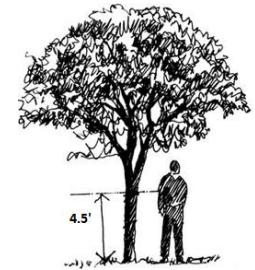
Trees should be **removed** if the trees are:

1. unhealthy with less than 1/2 their leaves
2. showing external signs of EAB infestation: woodpecker damage, bark splits, water sprouts at the base of the tree
3. planted in poor sites or not important to the landscape



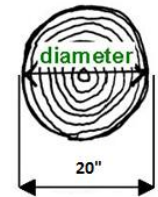
Treatment for trees $\leq 20''$ diameter

- Homeowners can treat with commercially available products
- Soil drench using products with 1.47% imidacloprid, most effective when applied in the spring, and according to the label



Treatment for trees $> 20''$ diameter

- Certified arborists with a pesticide applicators license can treat with professional products
- Use specialized equipment to apply emamectin benzoate
- Wider treatment timing window
- Find arborists at www.treesaregood.com



NOTE: While chemical treatments can be effective in protecting un-infested trees, or trees having minor signs of infestation, subsequent treatments are necessary every 1 to 2 years. Proper tree maintenance and avoidance of drought and other stressors are recommended.

Planting new or replacement trees

There are many different native trees in North Carolina so finding a tree is easy, but make sure it is suited for the planting site:

- mature size
- moisture, soil and light requirements
- streets, parks, lawns, natural areas all vary in site conditions



For more information, see these websites or contact your NCFS County Ranger:

http://ncforestservice.gov/contacts/contacts_main.htm

Official EAB website: www.emeraldashborer.info

US Forest Service: <http://na.fs.fed.us/fhp/eab>

Other ash borers: http://ashalert.osu.edu/userfiles/native_borers.pdf

EAB Pest Alert: www.na.fs.fed.us/spfo/pubs/pest_al/eab/eab.pdf

Don't Move Firewood: <http://www.dontmovefirewood.org>



ADAPTED FROM: Neighbors Against Bad Bugs, Purdue Extension, IN

EMERALD ASH BORER (EAB)

What to do if EAB has been confirmed in your county or within 15 miles of your location.

Inventory

How many ash trees do you have?
Where are they located?

Whether you are a homeowner or a community, follow these steps to decide your course of action.

- Value to owner or landscape?
- Healthy and few signs of EAB?
- Good location?

