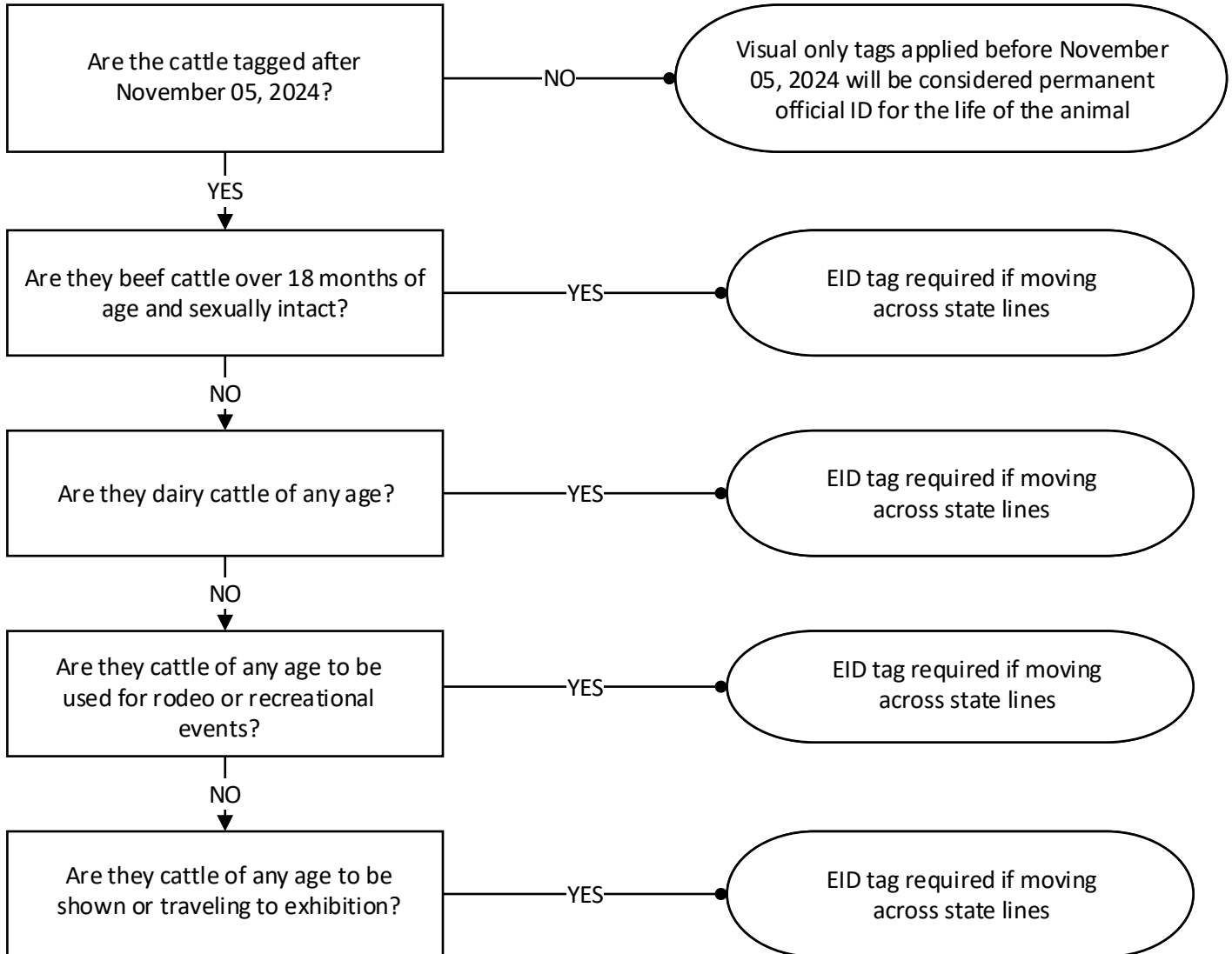


## Do my cows need EID (RFID) tags?

This decision tree follows USDA APHIS Animal Disease Traceability Final Rule regarding Electronic ID



Example of a Electronic ID tag (EID)  
Also referred to as a RFID or 840 tag

For more information on EID  
from USDA APHIS



[https://www.aphis.usda.gov/  
livestock-poultry-disease/  
traceability](https://www.aphis.usda.gov/livestock-poultry-disease/traceability)

To order EID tags in NC

Phone: (919) 707-3275

Email: [ncfarmid@ncagr.gov](mailto:ncfarmid@ncagr.gov)