

CANINE BODY LANGUAGE

Because dogs are descended from wolves, they share many of the same traits. One of these is the "pack instinct." Dogs recognize leadership in a group and transfer this tendency to their human families.

Dogs, like wolves and humans, communicate their emotions through body language. The illustrations below will help you to understand what *your* dog is saying.

ACTIVE SUBMISSION

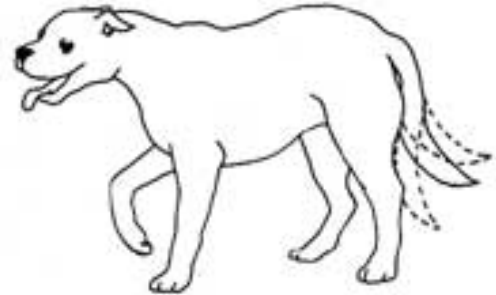
This dog knows that you are the leader and she wants you to approach her.



"I'm friendly—but please go slowly!"

PASSIVE SUBMISSION

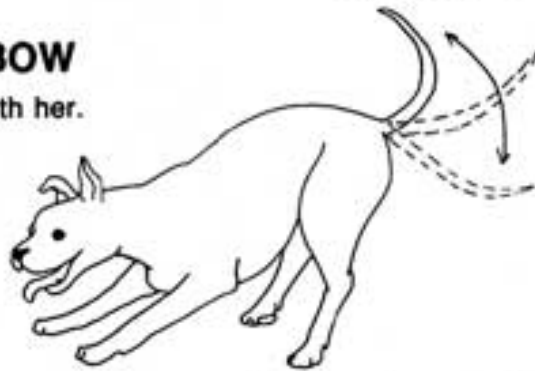
This dog knows that you are the leader, but she will come to you.



"Hi!" "Let's be friends!"

PLAYBOW

This is an invitation to play with her.



"It's time for some fun!"

AGGRESSION

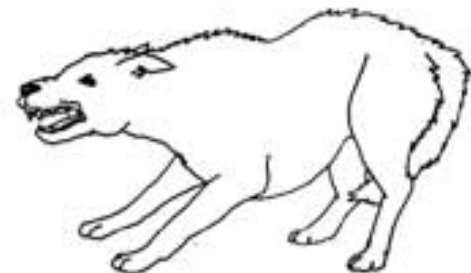
This dog does not recognize you as the leader. She may attack you.



"GO AWAY!"

FEAR

This dog is on the defensive. She is unpredictable and could attack.



"I'm scared, so back off!"

Remember, you must always maintain the role of a firm, but gentle leader with your companion dog to assure a happy relationship.