

SPOTTED LANTERNFLY

Non-native, invasive insect | Agricultural, ornamental, and nuisance pest
Report photos of suspected spotted lanternfly at [NCAGR.GOV/SLF](https://www.ncagr.gov/slf)



**adult
spotted
lanternfly**
*Lycorma
delicatula*



Lawrence Barringer, Pennsylvania Department of Agriculture, Bugwood.org

Kelly Oten, NC State University

LANTERNFLY LOOK-ALIKES

The insects below are native to North Carolina and do not need to be reported.



**giant
leopard
moth**
*Hypercompe
scribonia*

Clemson University - USDA Cooperative Extension Slide Series, Bugwood.org



Rebekah D. Wallace,
University of Georgia,
Bugwood.org



tiger moth
Apantesis spp.

Jessica Louque, Smithers Viscent, Bugwood.org



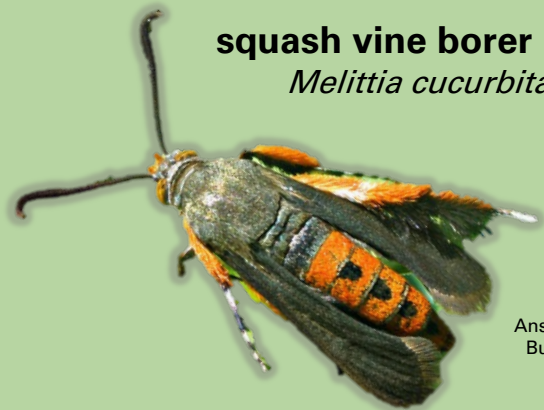
Rebekah D. Wallace,
University of Georgia,
Bugwood.org

tiger bee fly
Xenox tigrinus



Ansel Oommen,
Bugwood.org

squash vine borer moth
Melittia cucurbitae



Ansel Oommen,
Bugwood.org