

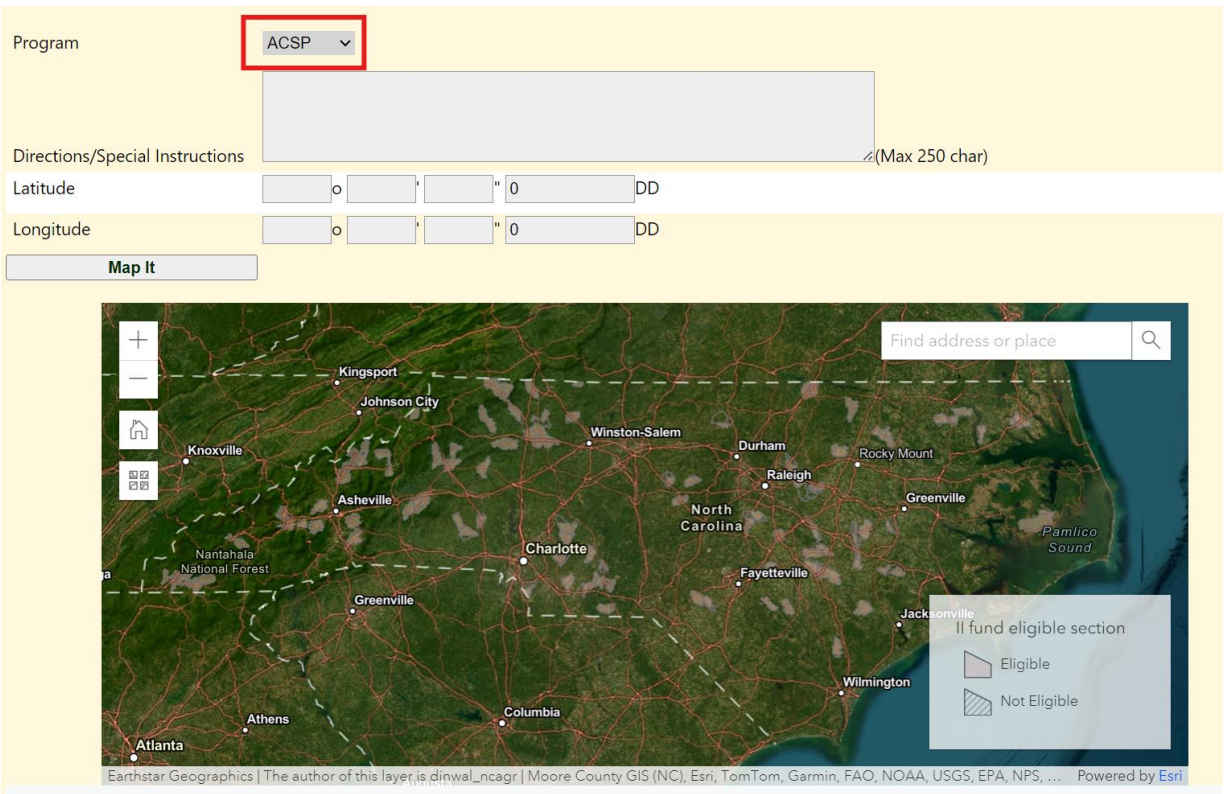
10/17/2024

Cost Share Program Updates

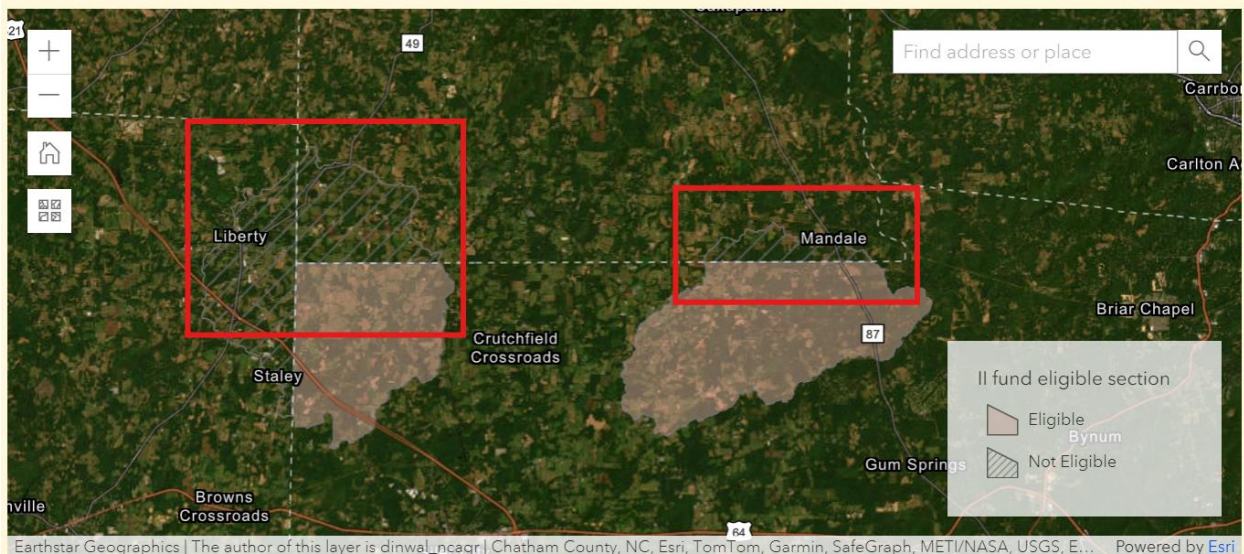
IISI Layer in CS2 Map It

A new layer showing the current approved Impaired & Impacted Streams Initiative (IISI) watersheds has been added to the Map It tool in CS2. The layer has been added as a visual reference only. **There are no changes to how the tool is used or how points are added to the map.**

On the Contract Information screen, when you select ACSP from the Program dropdown list the map will now display each watershed eligible for IISI funds.



In areas where the watershed crosses county boundaries and a portion of the watershed is not eligible in the neighboring county, the ineligible area is shown with hash marks.



10/17/2024

Supervisor Contract Process

A reference document has been added to the website that describes the steps for preparing and submitting supervisor and commission member contracts. The document titled [“Steps for Submitting Soil & Water Conservation Supervisor and Commission Member Contracts”](#) is available on each programs Resources page under General Program Forms.

BMP Limits Reference List

Several BMPs in ACSP and AgWRAP have funding/cost or number of contract limits that are tracked locally. In order to assist with this requirement, we have compiled a list of [“Cost Share Program BMPs with Cooperator Limits.”](#) This list is located under the Average Cost Lists and will be updated if there are changes to any of the BMP policies.