

STREAM DEBRIS REMOVAL CONTRACTORS:

Notice is hereby given that insert sponsor name here is soliciting contractors and professional firms to perform the removal of stream debris in the following waterways:

Group 1

Upper Broad Creek
Sasses Branch
Deep Run
Unnamed Tributaries 1-4

Group 2

Goose Creek
Beard Creek
Lower Duck Creek

Group 3

Vandemere Creek
Bay River
Whitehurst Creek
Chapel Creek
Smith Creek

Group 4

North Prong
South Prong
Neals Creek

Group 5

Trent Creek
West Trent
Fork Run

Group 6

Dawson Creek
Kershaw Creek
Tarklin Creek
Green Creek

Group 7

Orchard Creek
Broad Creek

Group 8

Upper Spring Creek
Eastham Creek
Drum Creek

Please reference the enclosed project documents:

- Groupings and Streams Description
- Group/Project Maps
- Scope of Work
- Woody Debris Removal Guidelines titled "Incremental Effects of Large Woody Debris Removal on Physical Aquatic Habitat".
- StRAP "Debris Removal & Processing Recommendations"
- Project Bid Sheet

Work must be completed according to the Woody Debris Removal Guidelines, starting on page B-1, of the attached document titled "Incremental Effects of Large Woody Debris Removal on Physical Aquatic Habitat".

Removed woody debris must be placed a minimum of **30 feet** from the edge of the stream and on the same side that it originated and **cabled** to ensure securement as required in the attached document titled StRAP "Debris Removal & Processing Recommendations" on page 2.

PROJECT TIME FRAME:

Target start date: December 19, 2022

Required completion date (all stream segments): December 31, 2024

Bids must be submitted on the enclosed Project Bid Sheet. Bids must be submitted for all project **groups (1-8)** and each individual stream segment within the eight groups. Bids must clearly state the total price for completing each individual stream segment within each group, NOT a price per linear foot. Lengths referenced in project documents and maps are approximate and will not be used to determine payment or project completion.

Bids must also include documentation of prior stream debris removal experience, reference letters, equipment list, and proof of liability insurance.

Insert sponsor name here reserves the right to reject any and all bids.

INSURANCE AND INDEMNITY (be sure to check with your county manager/commissioners/attorney if available for your specific insurance requirements). To the fullest extent permitted by laws and regulations, CONTRACTOR shall indemnify and hold harmless the insert sponsor name here and its officials, agents, and employees from and against all claims, damages, losses, and expenses, direct, indirect, or consequential (including but not limited to fees and charges of engineers or architects, attorneys, and other professionals and costs related to court action or arbitration) arising out of or resulting from CONTRACTOR'S performance of this Contract or the actions of the CONTRACTOR or its officials, employees, or contractors under this Contract or under contracts entered into by the CONTRACTOR in connection with this Contract. This indemnification shall survive the termination of this Contract.

In addition, CONTRACTOR shall comply with the North Carolina Workers' Compensation Act and shall provide for the payment of workers' compensation to its employees in the manner and to the extent required by such Act. Contractor shall also maintain Employers' Liability insurance limits of not less than \$1,000,000 per accident and \$1,000,000 each employee for injury by disease. Additionally, CONTRACTOR shall maintain, at its expense, the following minimum insurance coverage:

\$1,000,000 per occurrence /\$2,000,000 aggregate - Bodily Injury Liability, and \$1,000,000 - per occurrence/\$ 1,000,000 annual aggregate - Commercial General Liability \$100,000 - Property Damage Liability, or \$1,000,000 per occurrence /\$2,000,000 aggregate-Combined Single Limit Bodily Injury and Property Damage.

The CONTRACTOR shall maintain during the life of this contract automobile/vehicle liability insurance. Such coverage shall be written on a comprehensive form covering owned, non-owned and leased vehicles. Unless otherwise specified, this coverage shall be written providing liability limits at least in the amount of \$1,000,000.

CONTRACTOR, upon execution of this Contract, shall furnish to the insert sponsor name here a Certificate of Insurance reflecting the minimum limits stated above. The Certificate shall provide for thirty (30) days advance written notice in the event of a decrease, termination, or cancellation of coverage. Providing and maintaining adequate insurance coverage is a material obligation of the CONTRACTOR. All such insurance shall meet all laws of the State of North Carolina. Such insurance coverage shall be obtained from companies that are authorized to provide such coverage and that are authorized by the Commissioner of Insurance to do business in North Carolina. The CONTRACTOR shall at all times comply with the terms of such insurance policies, and all requirements of the insurer under any such insurance policies, except as they may conflict with existing North Carolina laws or this Contract. The limits of coverage under each insurance policy maintained by the CONTRACTOR shall not be interpreted as limiting the CONTRACTOR'S liability and obligations under the Contract.

Project Bid Sheets must be received by 5:00 pm on December 14, 2022. Send project bid sheets to, insert sponsor name here , mailing and or physical address here.

Questions about this project should be directed to contact person at contact number.

INSERT SPONSOR NAME HERE STREAM DEBRIS REMOVAL PROJECT
GROUPINGS and STREAMS DESCRIPTION

***Actual creeks to be completed and actual distance to be completed will be determined by the Board based on funding.**

GROUP 1

•**Upper Broad Creek, Sasses Branch, Deep Run, Unnamed Tributaries 1-4** – Work will consist of removal of un-marked debris from the stream channels. These areas may be designated as fish spawning or primary nursery areas. Project areas are as follows; *Upper Broad Creek*- from its junction with Highway 55 to its junction to Goose Creek. *Sasses Branch* - from its junction with Highway 55 to its junction to Upper Broad Creek. *Deep Run*- from its junction with Highway 55 to its junction to Upper Broad Creek. *Unnamed Tributaries 1-4*- between Lee Landing Road and Breighmere Drive.

GROUP 2

•**Goose Creek, Beard Creek, Lower Duck Creek** – Work will consist of removal of un-marked debris from the stream channels. These areas may be designated as fish spawning or primary nursery areas. Project areas for these streams are as follows; *Goose Creek* - from junction with Neuse Road to junction with Moore's Swamp Road and some adjoining tributaries. *Beard Creek* – from junction with Neuse Road to GPS coordinates 35° 5'32.65"N 76°51'18.41"W, from the junction with Neuse Road to GPS coordinates 35° 5'7.15"N 76°50'52.92"W, from the junction of Neuse Road to GPS coordinates 35° 2'48.06"N 76°50'38.61"W. *Lower Duck Creek*- from the junction with Goose Creek Road to the junction with the Neuse River.

GROUP 3

•**Vandemere Creek, Bay River, Whitehurst Creek, Chapel Creek, Smith Creek** – Work will consist of removal of un-marked debris from the stream channels. These areas may be designated as fish spawning or primary nursery areas. Project area for these streams are as follows; *Vandemere Creek* – from junction with Highway 304 to GPS coordinates 35°12'39.71"N 76°41'22.08"W. *Bay River* – from junction with Highway 304 to GPS coordinates 35°11'56.98"N 76°40'41.80"W. *Whitehurst Creek* – from junction with Highway 304 GPS coordinates 35° 9'59.51"N 76°43'52.97"W. *Chapel Creek*—From junction with Highway 304 to GPS coordinates 35°10'22.65"N 76°42'59.09"W. *Smith Creek*—From junction with Highway 304 to GPS coordinates 35°11'0.70"N 76°41'33.27"W.

GROUP 4

•**North Prong, South Prong, Neals Creek** - Work will consist of removal of un-marked debris from the stream channels. These areas may be designated as fish spawning or primary nursery areas. Project areas for these streams are as follows; *North Prong* – from junction with Mill Pond Road to the junction with Bay City Road. *South Prong* – from junction with Cooper Road to the junction with Neals Creek Road. *Neals Creek* – from the junction with Neals Creek Road to GPS coordinates 35° 8'5.35"N 76°46'26.75"W.

GROUP 5

•**Trent Creek, West Trent, Fork Run**– Work will consist of removal of un-marked debris from the stream channel. Project areas for these streams are as follows; *Trent Creek*—from Highway 55 at GPS coordinates 35° 6'15.51"N 76°43'5.86"W to Highway 55 at GPS coordinates 35° 5'38.60"N 76°42'48.56"W to GPS coordinates 35° 4'22.72"N 76°42'51.28"W. *West Trent*—from junction with Trent Creek to GPS coordinates 35° 5'46.44"N 76°43'27.86"W. *Fork Run*—from the junction with Trent Creek to GPS coordinates 35° 5'19.76"N 76°42'29.51"W.

Group 6

•**Dawson Creek, Tarklin Creek, Kershaw Creek, Green Creek**— Work will consist of removal of un-marked debris from the stream channel. These areas may be designated as fish spawning or primary nursery areas. Project areas for these streams are as follows; *Dawson Creek*—from the junction with Kershaw Road to the GPS coordinates 35° 1'58.19"N 76°48'5.24"W, from the junction with Don Lee Road to the GPS coordinates 35° 1'14.29"N 76°47'53.53"W, from the junction with Janeiro Road to GPS coordinates 35° 0'3.80"N 76°45'56.75"W along with some adjoining tributaries. *Tarklin Creek* – from the junction with Kershaw Road to the GPS coordinates 35° 1'42.01"N 76°45'57.65"W. *Kershaw Creek*—from the junction with Kershaw Road to the GPS coordinates 35° 2'48.88"N 76°44'34.68"W. *Green Creek* – from the junction with Kershaw Road to the GPS coordinates 35° 2'15.27"N 76°44'47.70"W.

Group 7

•**Orchard Creek, Broad Creek**—Work will consist of removal of un-marked debris from the stream channel. These areas may be designated as fish spawning or primary nursery areas. Project areas for these streams are as follows; *Orchard Creek*—from the junction with Straight Road to GPS coordinates 35° 3'50.03"N 76°39'27.26"W. *Broad Creek*—from the junction with Straight Road to GPS

coordinates 35° 5'2.41"N 76°39'47.86"W, from the junction with Straight Road to GPS coordinates 35° 4'55.31"N 76°39'35.51"W, from the junction with Pamlico Road to GPS coordinates 35° 5'3.02"N 76°38'38.99"W along with some adjoining tributaries.

Group 8

•**Upper Spring Creek, Eastham Creek, Drum Creek**—Work will consist of removal of un-marked debris from the stream channel. Project areas for these streams are as follows; *Upper Spring Creek*—from the junction with Hobucken School Road to the GPS coordinates 35°16'12.30"N 76°33'43.94"W. *Eastham Creek*—from the junction with Lowland Road to the GPS coordinates 35°17'18.79"N 76°33'53.31"W. *Drum Creek*—from the junction with to the junction with state road 1228 to the GPS coordinates 35°15'22.83"N 76°32'44.31"W.

SCOPE OF WORK

The CONTRACTOR will complete stream debris removal activities which include cutting and removing woody and non-woody debris from the targeted stream channels which impede or potentially impedes water flow. Woody debris may include downed trees, broken tops/limbs, and floating debris. Non-woody debris may include any object or material which impedes or potentially impedes water flow.

Woody material removed from the stream channel will be placed on the adjoining land, a minimum of 30 feet away from the stream bank and cabled to ensure securement. If possible, removed debris should be placed on the same side that it originated. Non-woody material must be hauled out and disposed of offsite. Insert sponsor name here will provide instructions on where to dispose of this type of material.

Removal of woody material will be in accordance with the Woody Debris Removal Guidelines starting on page B1 of the document titled "Incremental Effects of Large Woody Debris Removal on Physical Aquatic Habitat".

The CONTRACTOR will be responsible for compliance with any applicable federal, state, or local laws during the course of this project and will secure any required permits before beginning work.

CONTRACTOR will be required to enter into a Service Agreement with insert sponsor name here prior to start of any work.

Insert sponsor name here staff will conduct regular site visits to ensure the quality of work performed. Insert sponsor name here will not release payment to the CONTRACTOR until the completed work has been approved by insert sponsor name here staff and by state inspectors assigned by the North Carolina Department of Agriculture and Consumer Services.

PROJECT BID SHEET

Insert sponsor name here reserves the right to reject any and all bids.

INDIVIDUAL / COMPANY NAME: _____

Group 1:

Upper Broad Creek – Total project price. \$ _____

Sasses Branch – Total project price. \$ _____

Deep Run – Total project price. \$ _____

Unnamed Tributaries 1-4 – Total project price. \$ _____

Group 2:

Goose Creek – Total project price. \$ _____

Beard Creek – Total project price. \$ _____

Lower Duck Creek – Total project price. \$ _____

Group 3:

Vandemere Creek – Total project price. \$ _____

Bay River – Total project price. \$ _____

Whitehurst Creek – Total project price. \$ _____

Chapel Creek – Total project price. \$ _____

Smith Creek – Total project price. \$ _____

Group 4:

North Prong – Total project price. \$ _____

South Prong – Total project price. \$ _____

Neals Creek – Total project price. \$ _____

Group 5:

Trent Creek – Total project price. \$ _____

West Trent – Total project price. \$ _____

Fork Run – Total project price. \$ _____

Group 6:

Dawson Creek – Total project price. \$ _____

Tarklin Creek – Total project price. \$ _____

Kershaw Creek – Total project price. \$ _____

Green Creek – Total project price. \$ _____

Group 7:

Orchard Creek – Total project price. \$ _____

Broad Creek – Total project price. \$ _____

Group 8:

Upper Spring Creek – Total project price. \$ _____

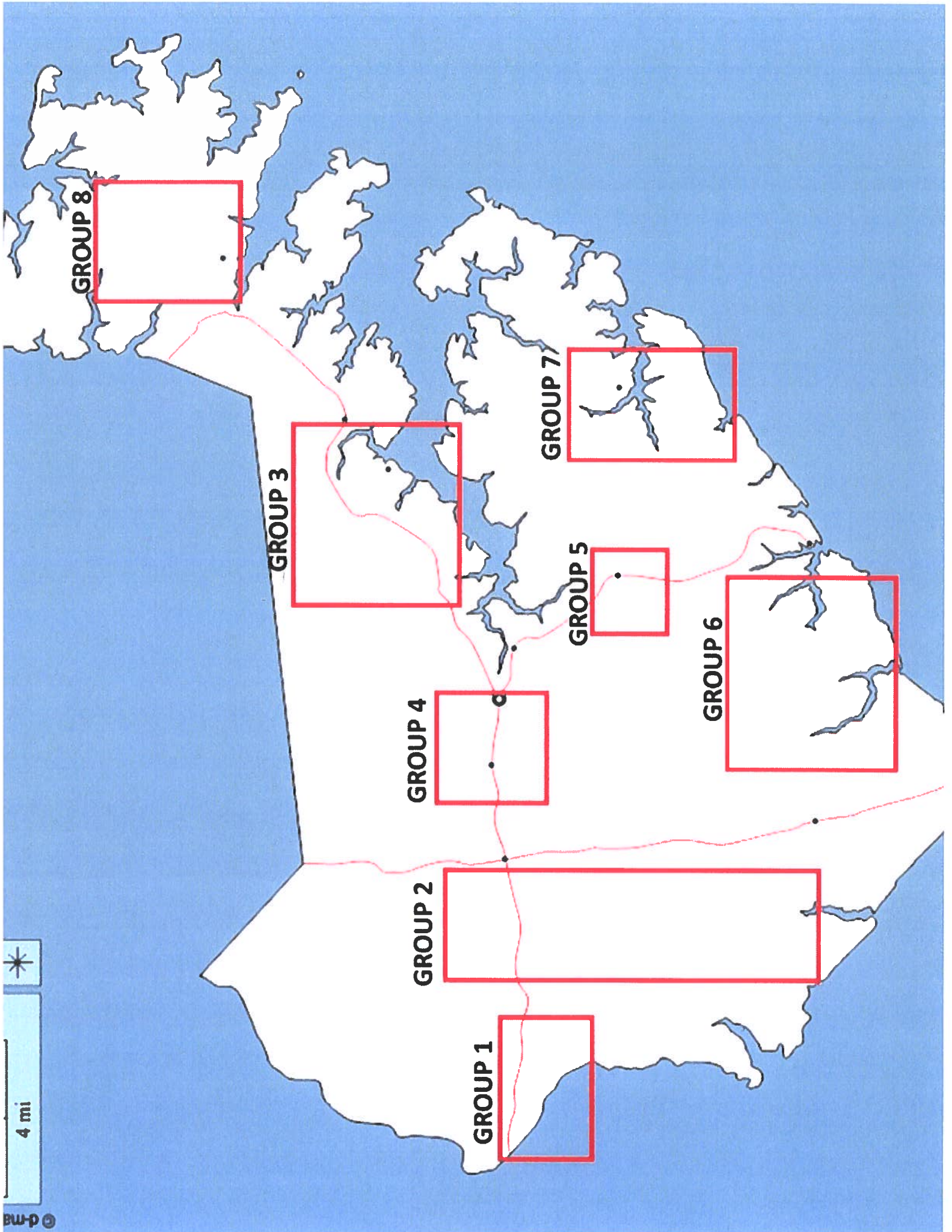
Eastham Creek – Total project price. \$ _____

Drum Creek – Total project price. \$ _____

Bid responses must include prices for all individual stream segments within each group. Any responses without prices for all individual stream segments and other required information listed below will be deemed unresponsive.

Please include the following items:

- References
- Letters
- Prior stream debris removal work experience
- Equipment list
- Proof of Liability Insurance meeting the minimum requirements listed on the Request for Proposals.



GROUP 8

GROUP 3

GROUP 7

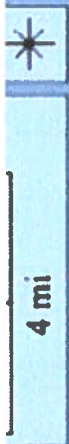
GROUP 5

GROUP 6

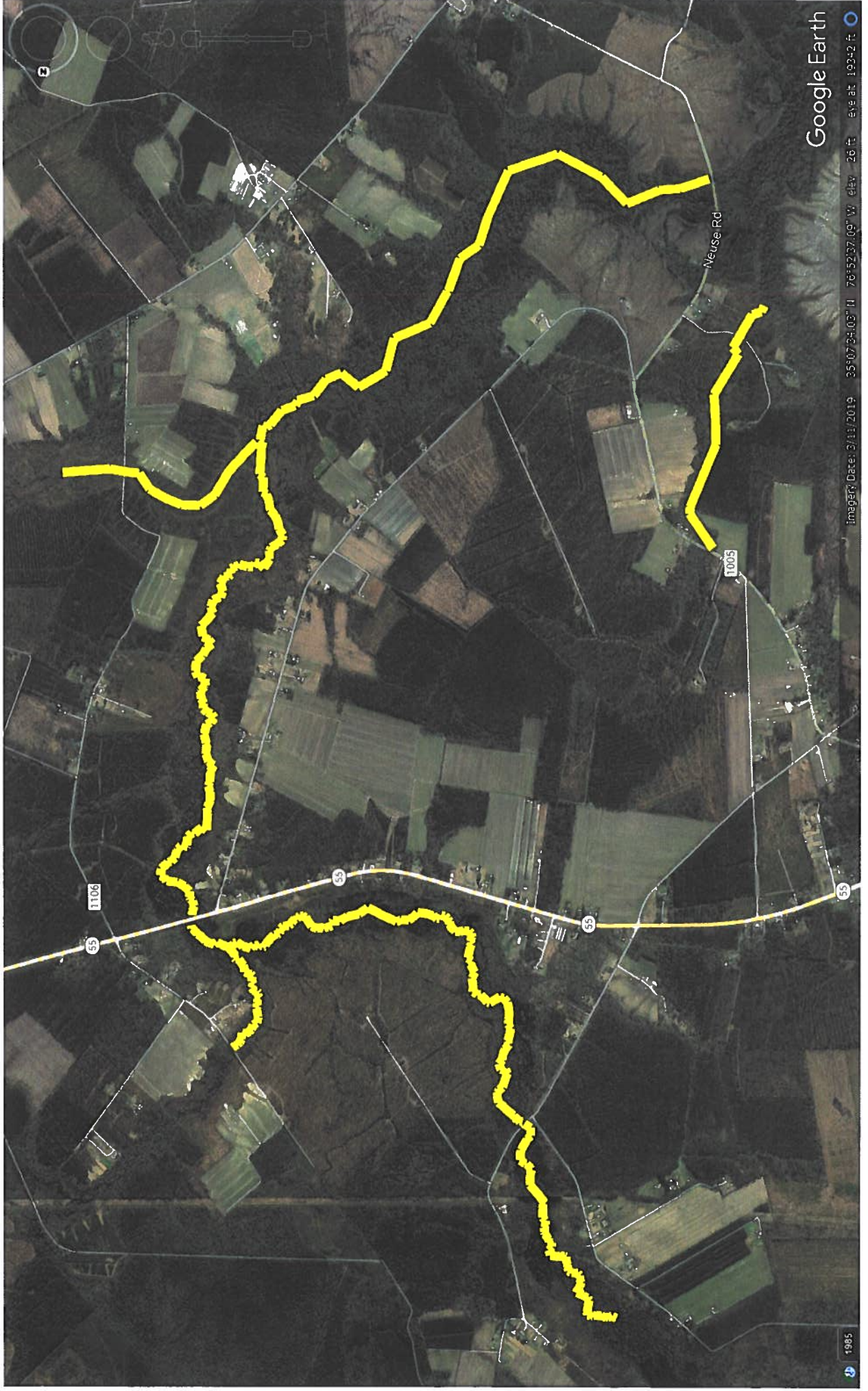
GROUP 4

GROUP 2

GROUP 1



Goose Creek



#9- Black Creek

4,428 LF

Start: 35° 6'32.62"N 76°53'42.19"W

End: 35° 7'11.10"N 76°53'32.11"W

Goose Creek

